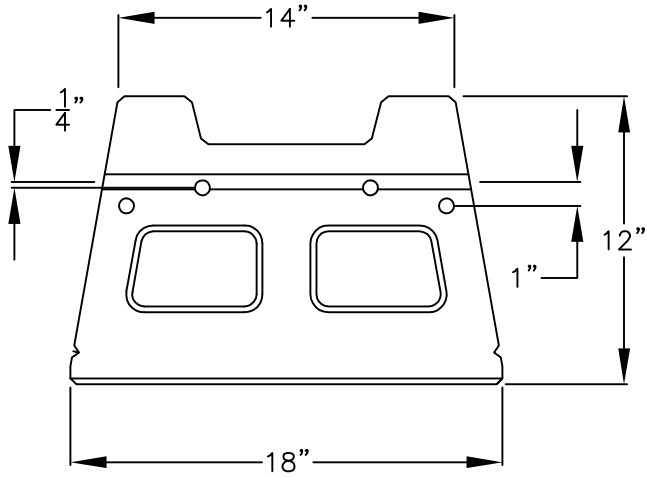
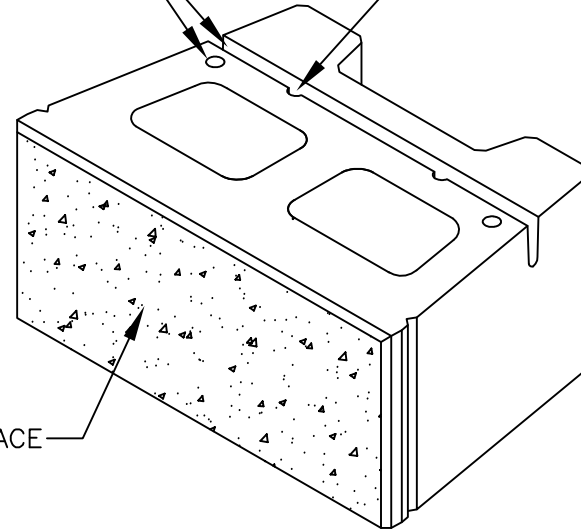


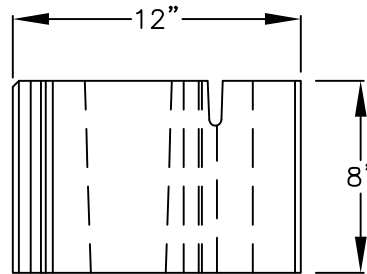
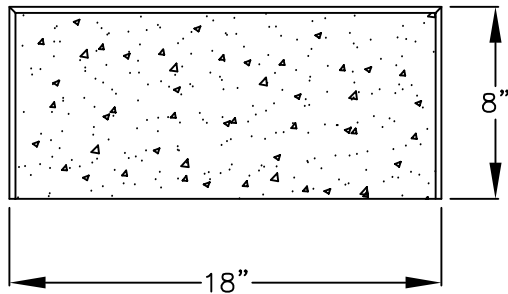
PIN HOLES AND SLOTS FOR 1" SETBACK WALL CONSTRUCTION



PIN HOLES FOR 1/4" SETBACK WALLS



STRAIGHT SPLIT FACE

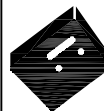


VERSA-LOK SQUARE FOOT UNIT

UNIT DIMENSIONS

SCALE: NONE

THESE PRELIMINARY DETAILS ARE INTENDED AS AN AID IN DESIGNING ATTRACTIVE, DURABLE RETAINING WALLS WITH VERSA-LOK UNITS. FINAL DETERMINATION OF THE SUITABILITY OF ANY INFORMATION OR MATERIAL FOR THE USE CONTEMPLATED, AND ITS MANNER OF USE, IS THE SOLE RESPONSIBILITY OF THE USER. A FINAL PROJECT SPECIFIC DESIGN SHOULD BE PREPARED BY A QUALIFIED, LICENSED, PROFESSIONAL ENGINEER.



VERSA-LOK[®]
Retaining Wall Systems

(800)770-4525 fax(651)770-4089
6348 Hwy36 Ste1, Oakdale, MN 55128 **Solid Solutions**[™]

VERSA-LOK SQUARE FOOT DETAILS

SQUARE FOOT UNIT

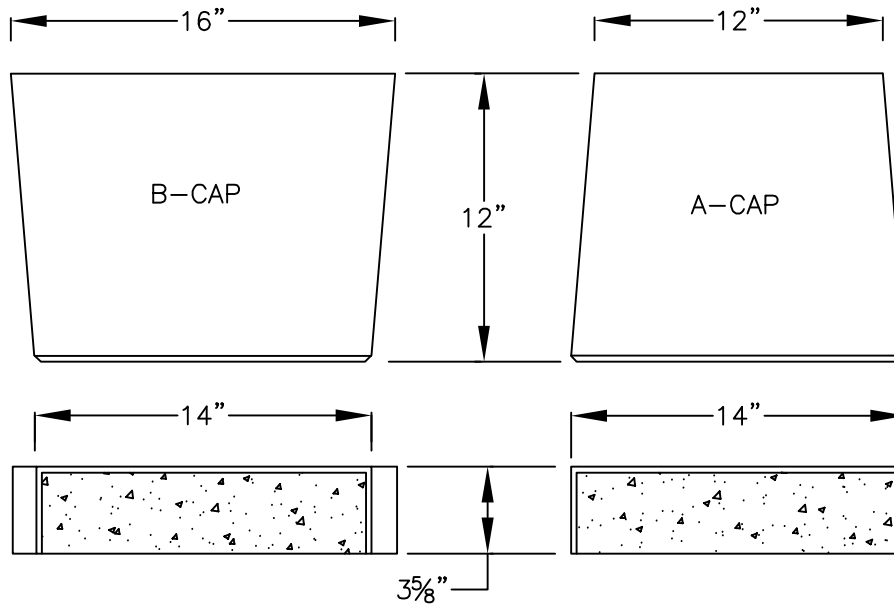
SCALE: 1 1/2"=1'

DRAWN BY: PPS

CHECKED BY:

DATE: 10/2007

DWG. NO. square foot unit



VERSA-LOK CAP UNITS

UNIT DIMENSIONS

SCALE: NONE

THESE PRELIMINARY DETAILS ARE INTENDED AS AN AID IN DESIGNING ATTRACTIVE, DURABLE RETAINING WALLS WITH VERSA-LOK UNITS. FINAL DETERMINATION OF THE SUITABILITY OF ANY INFORMATION OR MATERIAL FOR THE USE CONTEMPLATED, AND ITS MANNER OF USE, IS THE SOLE RESPONSIBILITY OF THE USER. A FINAL PROJECT SPECIFIC DESIGN SHOULD BE PREPARED BY A QUALIFIED, LICENSED, PROFESSIONAL ENGINEER.



VERSA-LOK[®]
Retaining Wall Systems

(800)770-4525 fax(651)770-4089
6348 Hwy36 Ste1, Oakdale, MN 55128 **Solid Solutions[™]**

VERSA-LOK SQUARE FOOT DETAILS

CAP UNITS

SCALE: 1 1/2"=1'

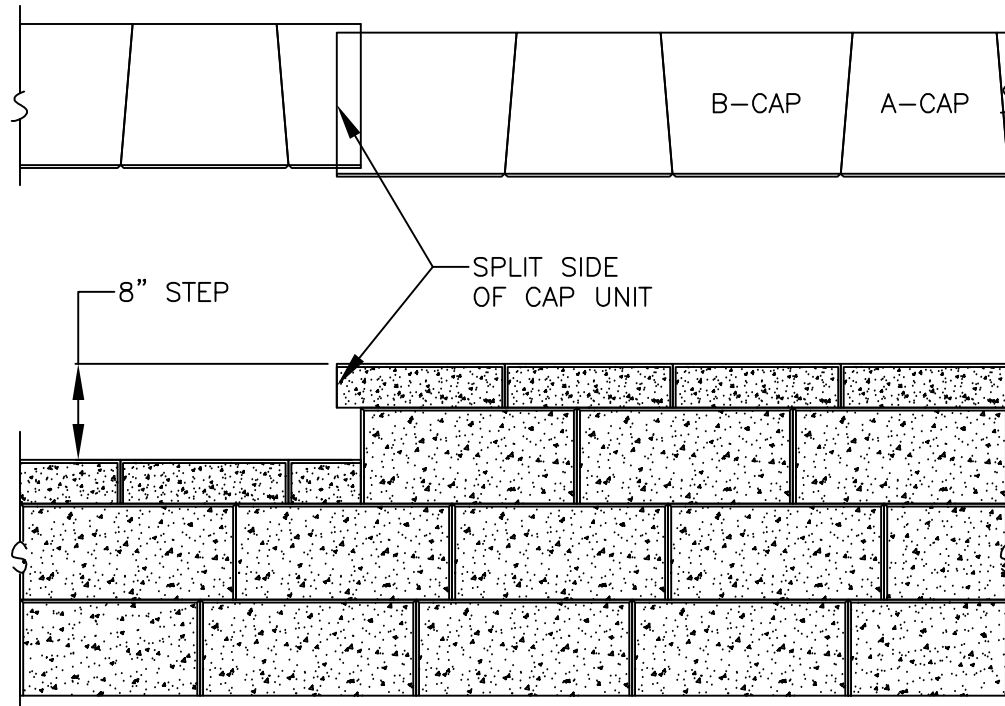
DRAWN BY: PPS

CHECKED BY:

DATE: 10/2007

DWG. NO. of cap units

FOR STRAIGHT WALLS, ALTERNATE A-CAP AND B-CAP



CAPPING DETAIL—PROFILE

SQUARE FOOT UNIT—STEP AT TOP OF WALL

SCALE: NONE

THESE PRELIMINARY DETAILS ARE INTENDED AS AN AID IN DESIGNING ATTRACTIVE, DURABLE RETAINING WALLS WITH VERSA-LOK UNITS. FINAL DETERMINATION OF THE SUITABILITY OF ANY INFORMATION OR MATERIAL FOR THE USE CONTEMPLATED, AND ITS MANNER OF USE, IS THE SOLE RESPONSIBILITY OF THE USER. A FINAL PROJECT SPECIFIC DESIGN SHOULD BE PREPARED BY A QUALIFIED, LICENSED, PROFESSIONAL ENGINEER.



VERSA-LOK[®]
Retaining Wall Systems

(800)770-4525 fax(651)770-4089
6348 Hwy36 Ste1, Oakdale, MN 55128 **Solid Solutions[™]**

VERSA-LOK SQUARE FOOT DETAILS

CAPPING DETAIL

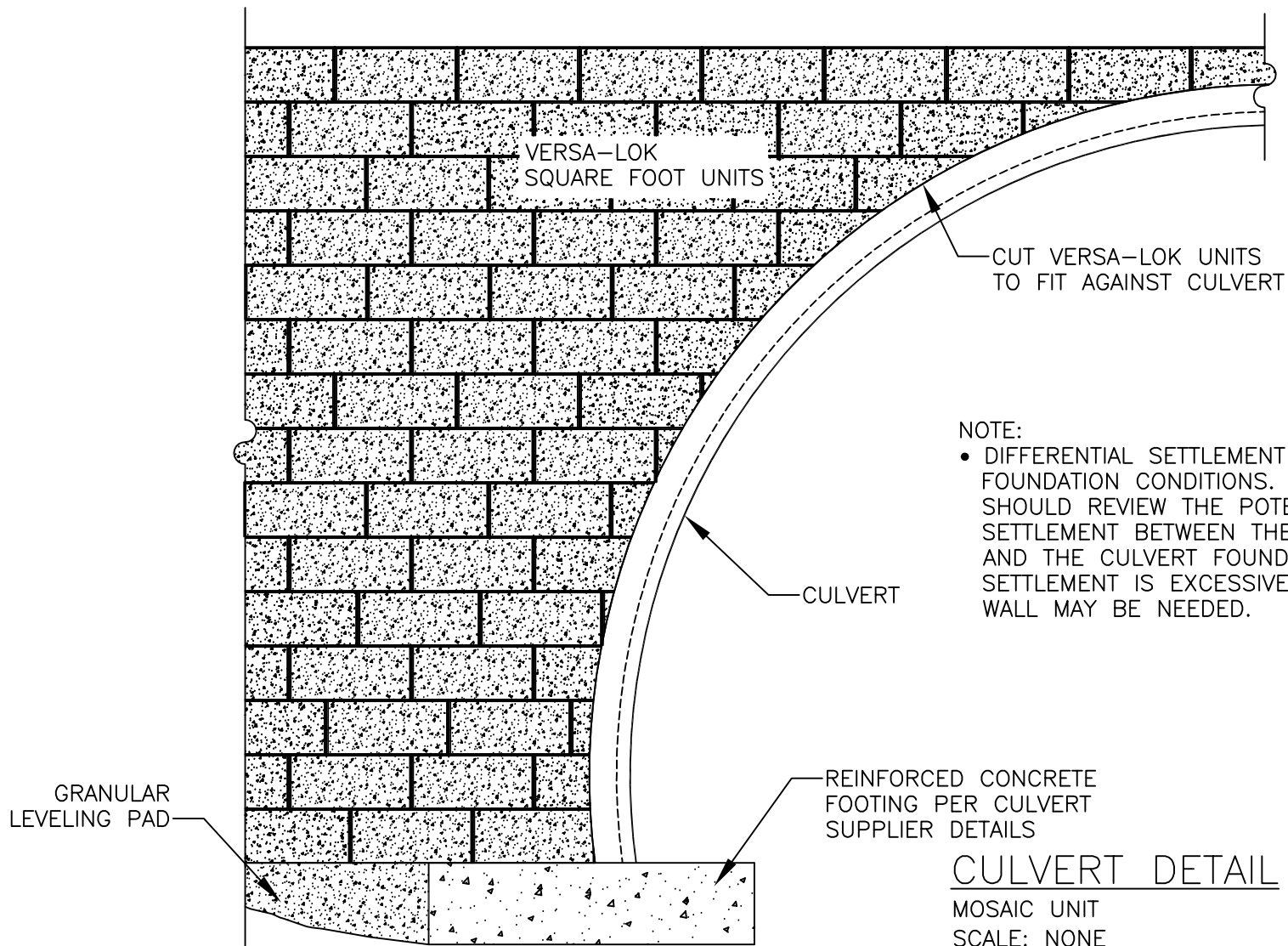
SCALE: 3/4"=1'

DRAWN BY: PPS

CHECKED BY:

DATE: 10/2007

DWG. NO. of capping detail



NOTE:

- DIFFERENTIAL SETTLEMENT CONCERNS WILL VARY WITH FOUNDATION CONDITIONS. THE DESIGN ENGINEER SHOULD REVIEW THE POTENTIAL FOR DIFFERENTIAL SETTLEMENT BETWEEN THE GRANULAR LEVELING PAD AND THE CULVERT FOUNDATION. IF THE DIFFERENTIAL SETTLEMENT IS EXCESSIVE, A CONTROL JOINT IN THE WALL MAY BE NEEDED.

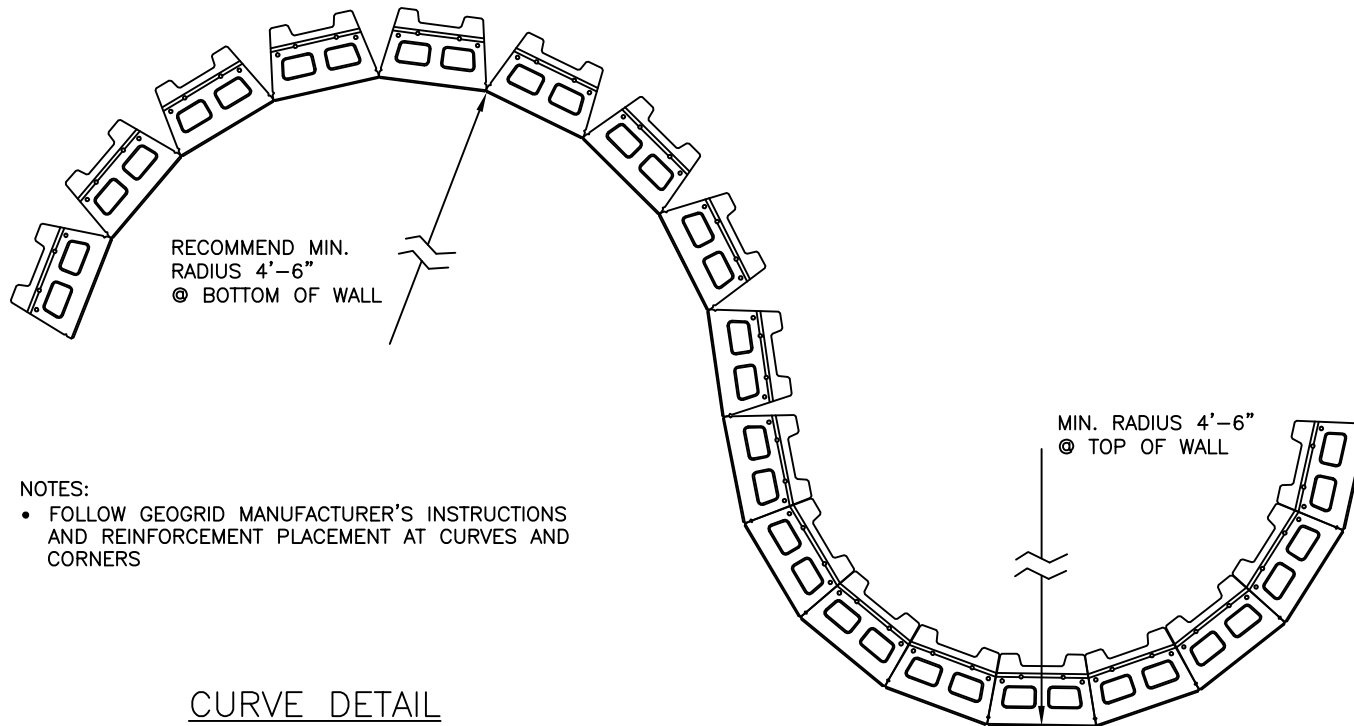
CULVERT DETAIL
 MOSAIC UNIT
 SCALE: NONE

THESE PRELIMINARY DETAILS ARE INTENDED AS AN AID IN DESIGNING ATTRACTIVE, DURABLE RETAINING WALLS WITH VERSA-LOK UNITS. FINAL DETERMINATION OF THE SUITABILITY OF ANY INFORMATION OR MATERIAL FOR THE USE CONTEMPLATED, AND ITS MANNER OF USE, IS THE SOLE RESPONSIBILITY OF THE USER. A FINAL PROJECT SPECIFIC DESIGN SHOULD BE PREPARED BY A QUALIFIED, LICENSED, PROFESSIONAL ENGINEER.



VERSA-LOK[®]
 Retaining Wall Systems
 (800)770-4525 fax(651)770-4089
 6348 Hwy36 Ste1, Oakdale, MN 55128 **Solid Solutions[™]**

VERSA-LOK SQUARE FOOT DETAILS	SCALE: 1/2"=1'
	DRAWN BY: PPS
	CHECKED BY:
	DATE: 10/2007
CULVERT DETAIL	DWG. NO. sf culvert detail



NOTES:

- FOLLOW GEOGRID MANUFACTURER'S INSTRUCTIONS AND REINFORCEMENT PLACEMENT AT CURVES AND CORNERS

CURVE DETAIL

SQUARE FOOT UNIT-TYPICAL CURVES
SCALE: NONE

THESE PRELIMINARY DETAILS ARE INTENDED AS AN AID IN DESIGNING ATTRACTIVE, DURABLE RETAINING WALLS WITH VERSA-LOK UNITS. FINAL DETERMINATION OF THE SUITABILITY OF ANY INFORMATION OR MATERIAL FOR THE USE CONTEMPLATED, AND ITS MANNER OF USE, IS THE SOLE RESPONSIBILITY OF THE USER. A FINAL PROJECT SPECIFIC DESIGN SHOULD BE PREPARED BY A QUALIFIED, LICENSED, PROFESSIONAL ENGINEER.



VERSA-LOK[®]
Retaining Wall Systems

(800)770-4525 fax(651)770-4089
6348 Hwy36 Ste1, Oakdale,MN 55128 **Solid Solutions[™]**

VERSA-LOK SQUARE FOOT DETAILS

CURVE

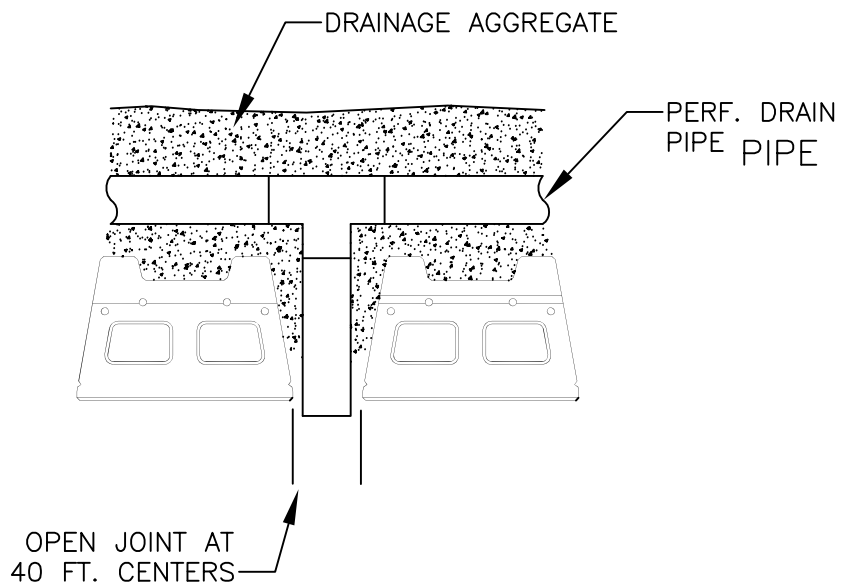
SCALE: 3/8"=1'

DRAWN BY: PPS

CHECKED BY:

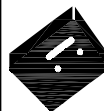
DATE: 10/2007

DWG. NO.
of curve



DRAIN DETAIL
 SQUARE FOOT UNIT
 SCALE: NONE

THESE PRELIMINARY DETAILS ARE INTENDED AS AN AID IN DESIGNING ATTRACTIVE, DURABLE RETAINING WALLS WITH VERSA-LOK UNITS. FINAL DETERMINATION OF THE SUITABILITY OF ANY INFORMATION OR MATERIAL FOR THE USE CONTEMPLATED, AND ITS MANNER OF USE, IS THE SOLE RESPONSIBILITY OF THE USER. A FINAL PROJECT SPECIFIC DESIGN SHOULD BE PREPARED BY A QUALIFIED, LICENSED, PROFESSIONAL ENGINEER.



VERSA-LOK[®]
Retaining Wall Systems

(800)770-4525 fax(651)770-4089
 6348 Hwy36 Ste1, Oakdale, MN 55128 **Solid Solutions[™]**

VERSA-LOK SQUARE FOOT DETAILS

DRAIN DETAIL

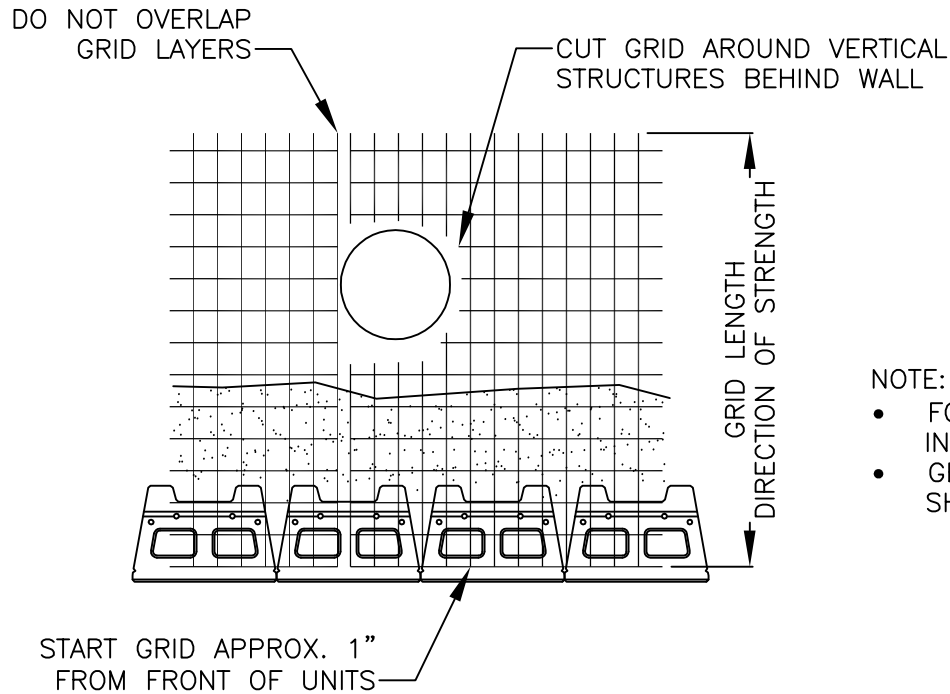
SCALE: 3/4"=1'

DRAWN BY: PPS

CHECKED BY:

DATE: 10/2007

DWG. NO. sf drain detail



NOTE:

- FOLLOW GEOSYNTHETIC GRID MANUFACTURER'S INSTALLATION INSTRUCTIONS AND SPECIFICATIONS
- GEOGRID LENGTH AND ELEVATION PLACEMENT SHALL BE DETERMINED BY WALL DESIGN ENGINEER

GEOSYNTHETIC AT STRUCTURES BEHIND WALL

SQUARE FOOT UNIT

SCALE: NONE

THESE PRELIMINARY DETAILS ARE INTENDED AS AN AID IN DESIGNING ATTRACTIVE, DURABLE RETAINING WALLS WITH VERSA-LOK UNITS. FINAL DETERMINATION OF THE SUITABILITY OF ANY INFORMATION OR MATERIAL FOR THE USE CONTEMPLATED, AND ITS MANNER OF USE, IS THE SOLE RESPONSIBILITY OF THE USER. A FINAL PROJECT SPECIFIC DESIGN SHOULD BE PREPARED BY A QUALIFIED, LICENSED, PROFESSIONAL ENGINEER.



VERSA-LOK[®]
Retaining Wall Systems

(800)770-4525 fax(651)770-4089
6348 Hwy36 Ste1, Oakdale, MN 55128 **Solid Solutions[™]**

VERSA-LOK SQUARE FOOT DETAILS

GEOSYNTHETIC INSTALLATION

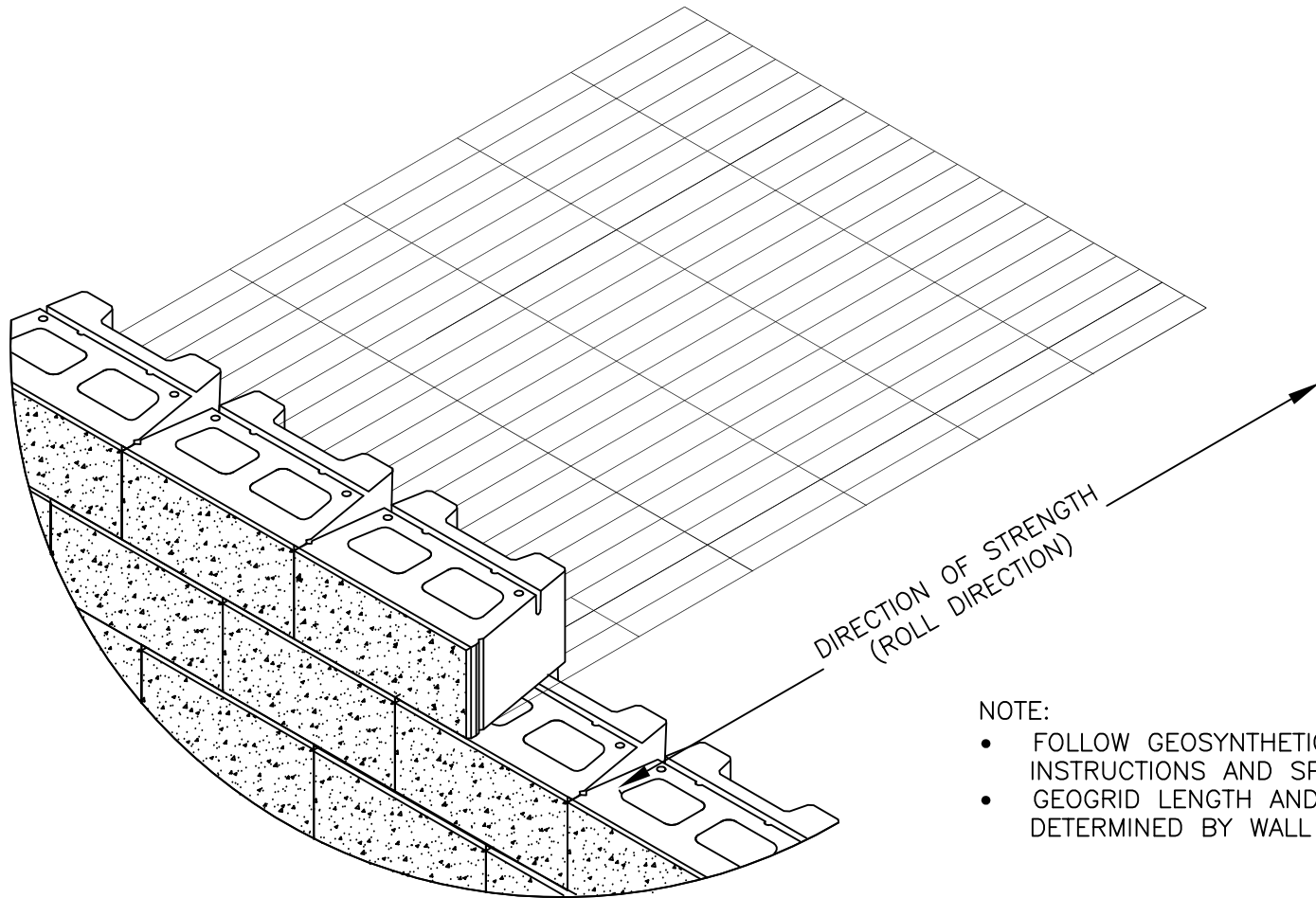
SCALE: 1/2"=1'

DRAWN BY: PPS

CHECKED BY:

DATE: 10/2007

DWG. NO. of geosynthetic installation detail



NOTE:

- FOLLOW GEOSYNTHETIC GRID MANUFACTURER'S INSTALLATION INSTRUCTIONS AND SPECIFICATIONS
- GEOGRID LENGTH AND ELEVATION PLACEMENT SHALL BE DETERMINED BY WALL DESIGN ENGINEER

GEOSYNTHETIC INSTALLATION DETAIL

SQUARE FOOT UNIT

SCALE: NONE

THESE PRELIMINARY DETAILS ARE INTENDED AS AN AID IN DESIGNING ATTRACTIVE, DURABLE RETAINING WALLS WITH VERSA-LOK UNITS. FINAL DETERMINATION OF THE SUITABILITY OF ANY INFORMATION OR MATERIAL FOR THE USE CONTEMPLATED, AND ITS MANNER OF USE, IS THE SOLE RESPONSIBILITY OF THE USER. A FINAL PROJECT SPECIFIC DESIGN SHOULD BE PREPARED BY A QUALIFIED, LICENSED, PROFESSIONAL ENGINEER.



VERSA-LOK[®]
Retaining Wall Systems

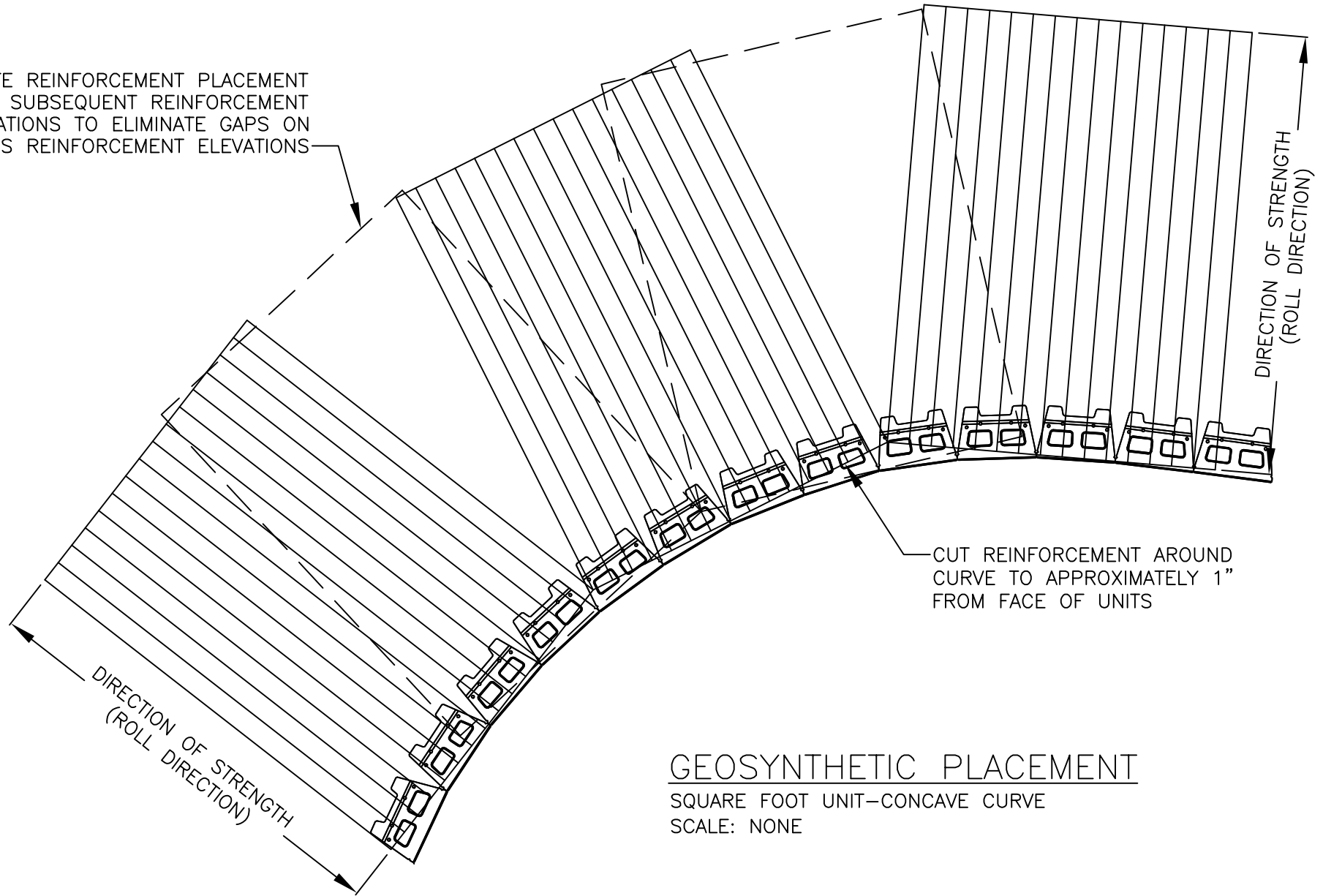
(800)770-4525 fax(651)770-4089
6348 Hwy36 Ste1, Oakdale,MN 55128 **Solid Solutions[™]**

VERSA-LOK SQUARE FOOT DETAILS

GEOSYNTHETIC INSTALLATION

SCALE:	3/4"=1'
DRAWN BY:	PPS
CHECKED BY:	
DATE:	10/2007
DWG. NO.	of geosynthetic installation detail

ALTERNATE REINFORCEMENT PLACEMENT
ON SUBSEQUENT REINFORCEMENT
ELEVATIONS TO ELIMINATE GAPS ON
PREVIOUS REINFORCEMENT ELEVATIONS



GEOSYNTHETIC PLACEMENT

SQUARE FOOT UNIT—CONCAVE CURVE

SCALE: NONE

THESE PRELIMINARY DETAILS ARE INTENDED AS AN AID IN DESIGNING ATTRACTIVE, DURABLE RETAINING WALLS WITH VERSA-LOK UNITS. FINAL DETERMINATION OF THE SUITABILITY OF ANY INFORMATION OR MATERIAL FOR THE USE CONTEMPLATED, AND ITS MANNER OF USE, IS THE SOLE RESPONSIBILITY OF THE USER. A FINAL PROJECT SPECIFIC DESIGN SHOULD BE PREPARED BY A QUALIFIED, LICENSED, PROFESSIONAL ENGINEER.



VERSA-LOK[®]
Retaining Wall Systems

(800)770-4525 fax(651)770-4089
6348 Hwy36 Ste1, Oakdale, MN 55128 **Solid Solutions[™]**

VERSA-LOK SQUARE FOOT DETAILS

GEOSYNTHETIC PLACEMENT
CONCAVE CURVE

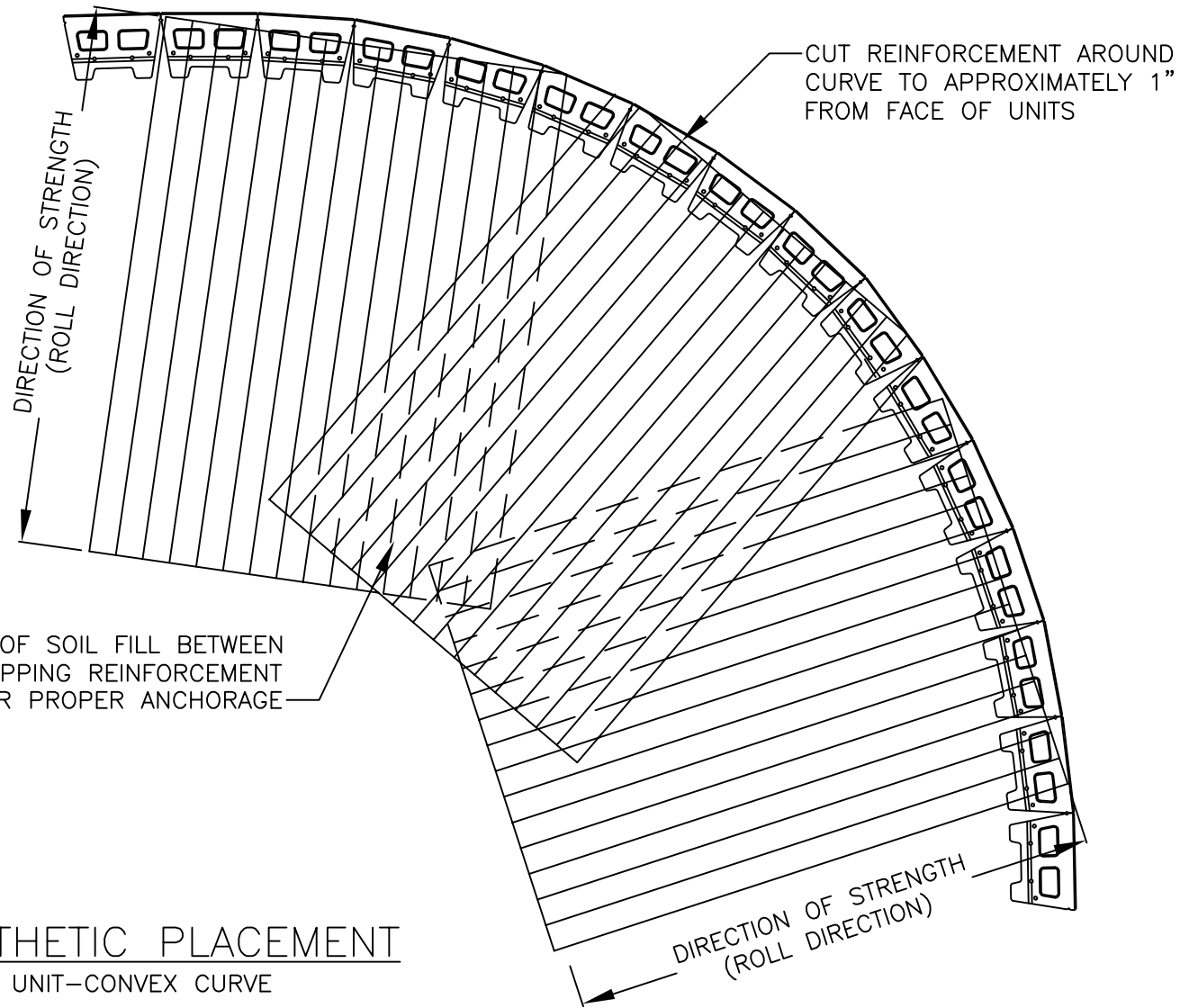
SCALE: 3/8"=1'

DRAWN BY: PPS

CHECKED BY:

DATE: 10/2007

DWG. NO.
sf grid concave curve



PLACE 3" OF SOIL FILL BETWEEN
OVERLAPPING REINFORCEMENT
FOR PROPER ANCHORAGE

GEOSYNTHETIC PLACEMENT

SQUARE FOOT UNIT-CONVEX CURVE

SCALE: NONE

THESE PRELIMINARY DETAILS ARE INTENDED AS AN AID IN DESIGNING ATTRACTIVE, DURABLE RETAINING WALLS WITH VERSA-LOK UNITS. FINAL DETERMINATION OF THE SUITABILITY OF ANY INFORMATION OR MATERIAL FOR THE USE CONTEMPLATED, AND ITS MANNER OF USE, IS THE SOLE RESPONSIBILITY OF THE USER. A FINAL PROJECT SPECIFIC DESIGN SHOULD BE PREPARED BY A QUALIFIED, LICENSED, PROFESSIONAL ENGINEER.



VERSA-LOK®
Retaining Wall Systems

(800)770-4525 fax(651)770-4089
6348 Hwy36 Ste1, Oakdale, MN 55128 **Solid Solutions™**

VERSA-LOK SQUARE FOOT DETAILS

GEOSYNTHETIC PLACEMENT
CONVEX CURVE

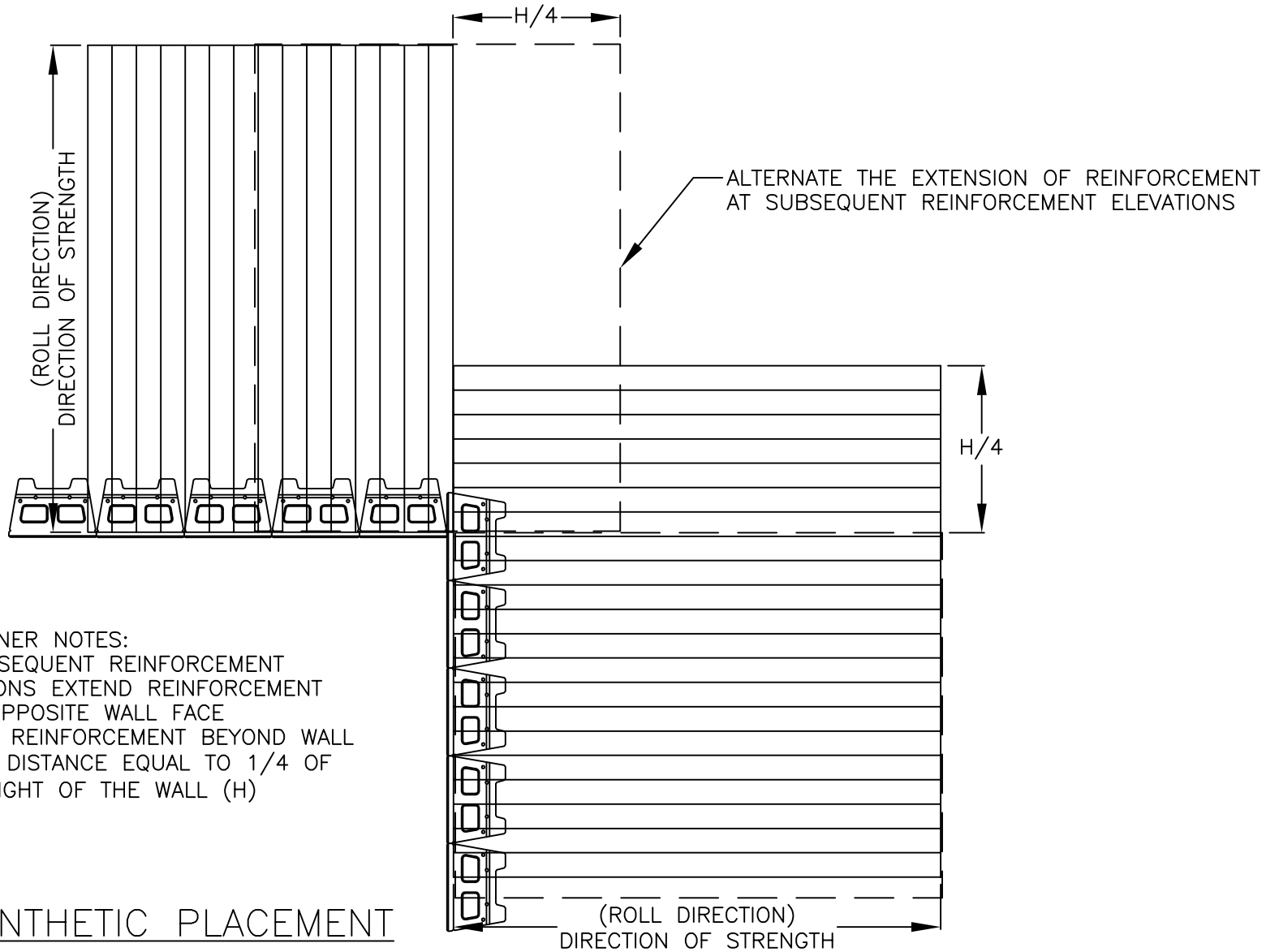
SCALE: 3/8"=1'

DRAWN BY: PPS

CHECKED BY:

DATE: 10/2007

DWG. NO.
of grid convex curve



INSIDE CORNER NOTES:

- AT SUBSEQUENT REINFORCEMENT ELEVATIONS EXTEND REINFORCEMENT FROM OPPOSITE WALL FACE
- EXTEND REINFORCEMENT BEYOND WALL FACE A DISTANCE EQUAL TO 1/4 OF THE HEIGHT OF THE WALL (H)

GEOSYNTHETIC PLACEMENT

SQUARE FOOT UNIT-INSIDE CORNER

SCALE: NONE

THESE PRELIMINARY DETAILS ARE INTENDED AS AN AID IN DESIGNING ATTRACTIVE, DURABLE RETAINING WALLS WITH VERSA-LOK UNITS. FINAL DETERMINATION OF THE SUITABILITY OF ANY INFORMATION OR MATERIAL FOR THE USE CONTEMPLATED, AND ITS MANNER OF USE, IS THE SOLE RESPONSIBILITY OF THE USER. A FINAL PROJECT SPECIFIC DESIGN SHOULD BE PREPARED BY A QUALIFIED, LICENSED, PROFESSIONAL ENGINEER.



VERSA-LOK®
Retaining Wall Systems

(800)770-4525 fax(651)770-4089
6348 Hwy36 Ste1, Oakdale,MN 55128 **Solid Solutions™**

VERSA-LOK SQUARE FOOT DETAILS

GEOSYNTHETIC PLACEMENT
INSIDE CORNER

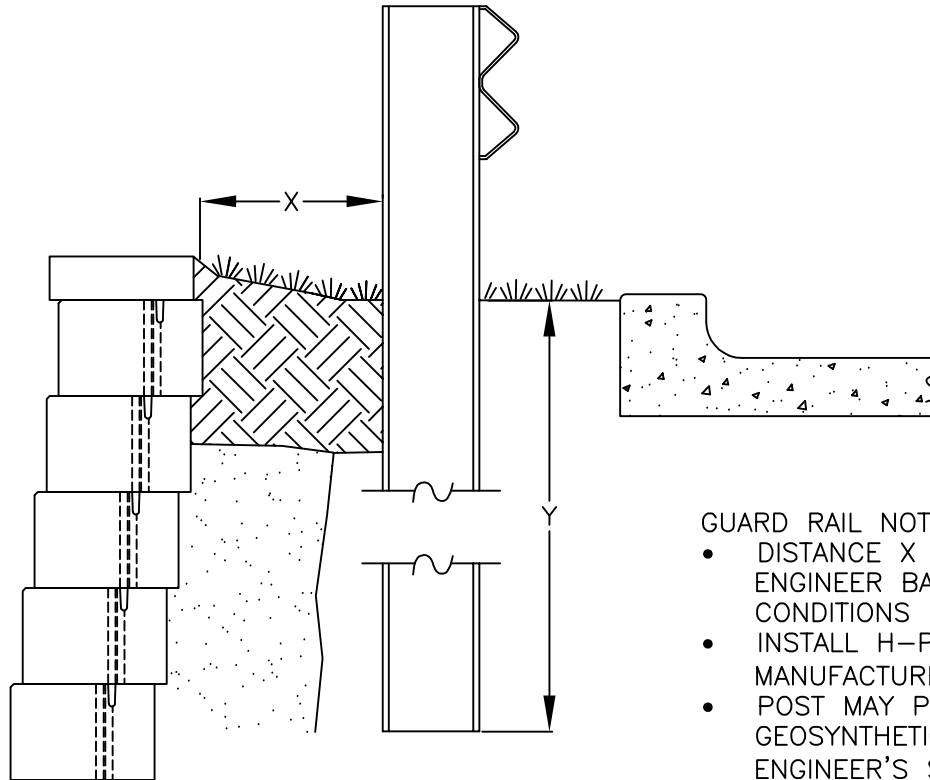
SCALE: 3/8"=1'

DRAWN BY: PPS

CHECKED BY:

DATE: 10/2007

DWG. NO. of grid inside corner



GUARD RAIL NOTES:

- DISTANCE X AND Y TO BE DETERMINED BY ENGINEER BASED ON SOILS AND LOADING CONDITIONS
- INSTALL H-PILE OR WOOD POST AS PER MANUFACTURER'S RECOMMENDATIONS
- POST MAY PIERCE UPPER LAYER OF GEOSYNTHETIC AS PER WALL DESIGN ENGINEER'S SPECIFICATIONS

GUARD RAIL DETAIL

SQUARE FOOT UNIT-TYPICAL GUARD RAIL

SCALE: NONE

THESE PRELIMINARY DETAILS ARE INTENDED AS AN AID IN DESIGNING ATTRACTIVE, DURABLE RETAINING WALLS WITH VERSA-LOK UNITS. FINAL DETERMINATION OF THE SUITABILITY OF ANY INFORMATION OR MATERIAL FOR THE USE CONTEMPLATED, AND ITS MANNER OF USE, IS THE SOLE RESPONSIBILITY OF THE USER. A FINAL PROJECT SPECIFIC DESIGN SHOULD BE PREPARED BY A QUALIFIED, LICENSED, PROFESSIONAL ENGINEER.



VERSA-LOK®
Retaining Wall Systems

(800)770-4525 fax(651)770-4089
6348 Hwy36 Ste1, Oakdale,MN 55128 **Solid Solutions™**

VERSA-LOK SQUARE FOOT DETAILS

GUARD RAIL DETAIL

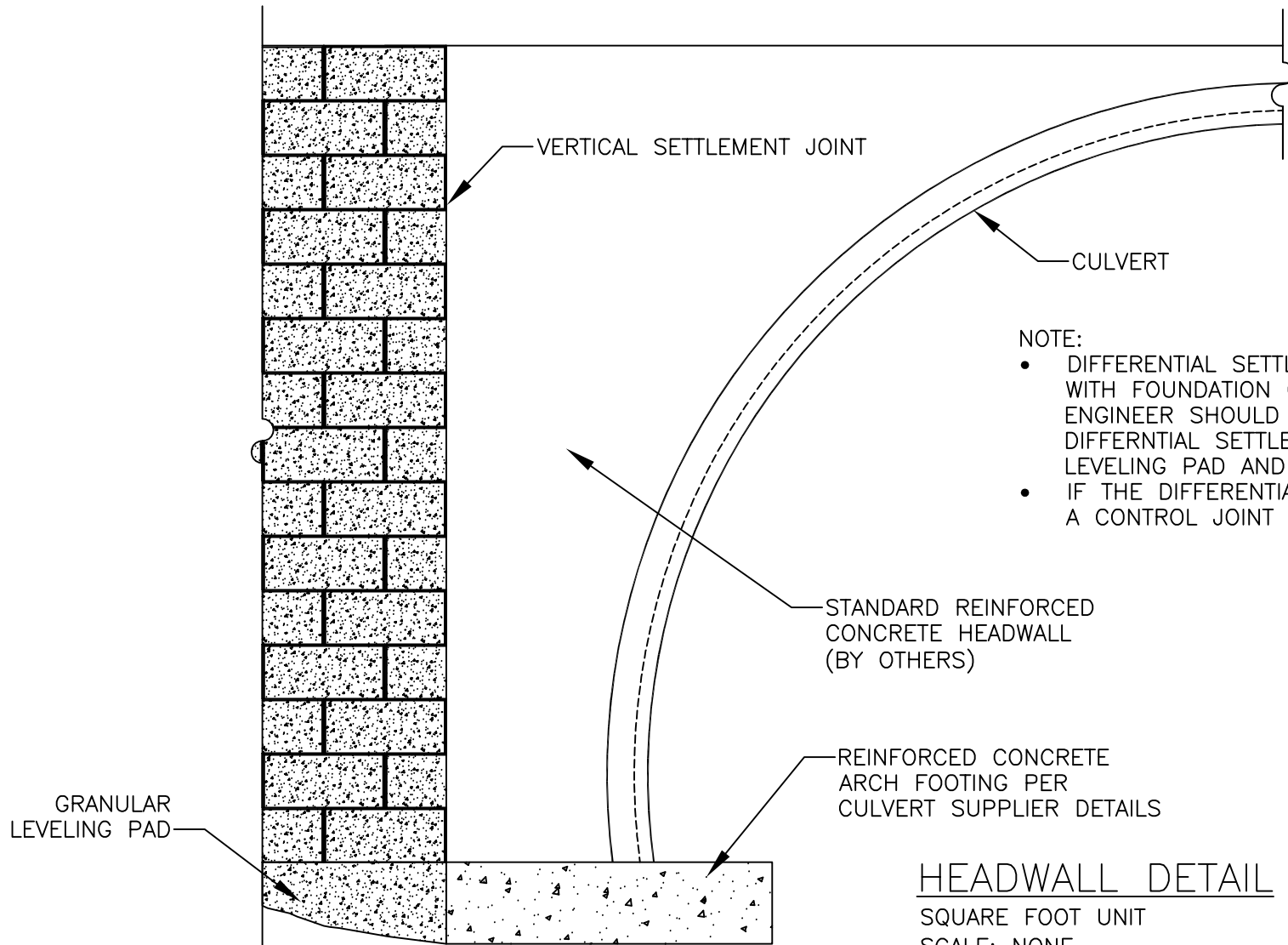
SCALE: 3/4"=1'

DRAWN BY: PPS

CHECKED BY:

DATE: 10/2007

DWG. NO. ef guard rail detail



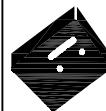
NOTE:

- DIFFERENTIAL SETTLEMENT CONCERNS WILL VARY WITH FOUNDATION CONDITIONS. THE DESIGN ENGINEER SHOULD REVIEW THE POTENTIAL FOR DIFFERENTIAL SETTLEMENT BETWEEN THE GRANULAR LEVELING PAD AND THE CULVERT FOUNDATION.
- IF THE DIFFERENTIAL SETTLEMENT IS EXCESSIVE, A CONTROL JOINT IN THE WALL MAY BE NEEDED.

HEADWALL DETAIL

SQUARE FOOT UNIT
SCALE: NONE

THESE PRELIMINARY DETAILS ARE INTENDED AS AN AID IN DESIGNING ATTRACTIVE, DURABLE RETAINING WALLS WITH VERSA-LOK UNITS. FINAL DETERMINATION OF THE SUITABILITY OF ANY INFORMATION OR MATERIAL FOR THE USE CONTEMPLATED, AND ITS MANNER OF USE, IS THE SOLE RESPONSIBILITY OF THE USER. A FINAL PROJECT SPECIFIC DESIGN SHOULD BE PREPARED BY A QUALIFIED, LICENSED, PROFESSIONAL ENGINEER.



VERSA-LOK®
Retaining Wall Systems

(800)770-4525 fax(651)770-4089
6348 Hwy36 Ste1, Oakdale,MN 55128 **Solid Solutions™**

VERSA-LOK SQUARE FOOT DETAILS

CULVERT DETAIL

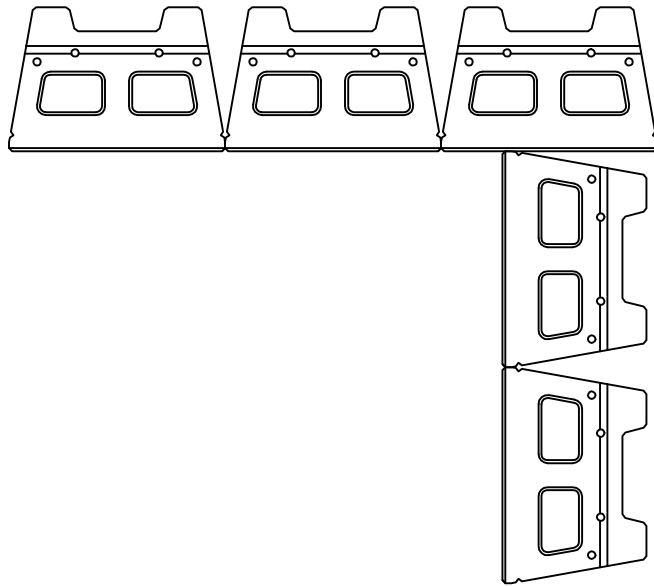
SCALE: 1/2"=1'

DRAWN BY: PPS

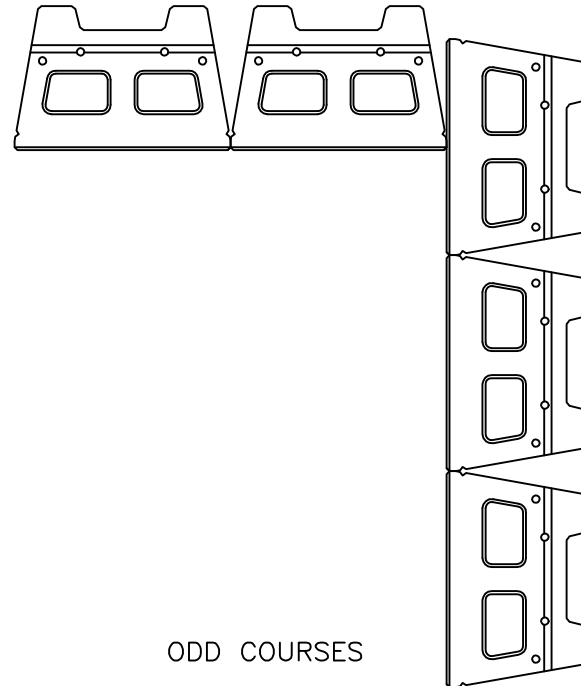
CHECKED BY:

DATE: 10/2007

DWG. NO. sf culvert detail



EVEN COURSES



ODD COURSES

CORNER DETAIL

SQUARE FOOT UNIT-90° INSIDE

SCALE: NONE

THESE PRELIMINARY DETAILS ARE INTENDED AS AN AID IN DESIGNING ATTRACTIVE, DURABLE RETAINING WALLS WITH VERSA-LOK UNITS. FINAL DETERMINATION OF THE SUITABILITY OF ANY INFORMATION OR MATERIAL FOR THE USE CONTEMPLATED, AND ITS MANNER OF USE, IS THE SOLE RESPONSIBILITY OF THE USER. A FINAL PROJECT SPECIFIC DESIGN SHOULD BE PREPARED BY A QUALIFIED, LICENSED, PROFESSIONAL ENGINEER.



VERSA-LOK[®]
Retaining Wall Systems

(800)770-4525 fax(651)770-4089
 6348 Hwy36 Ste1, Oakdale,MN 55128 **Solid Solutions[™]**

VERSA-LOK SQUARE FOOT DETAILS

INSIDE 90 DEGREE CORNER

SCALE: 3/4"=1'

DRAWN BY: PPS

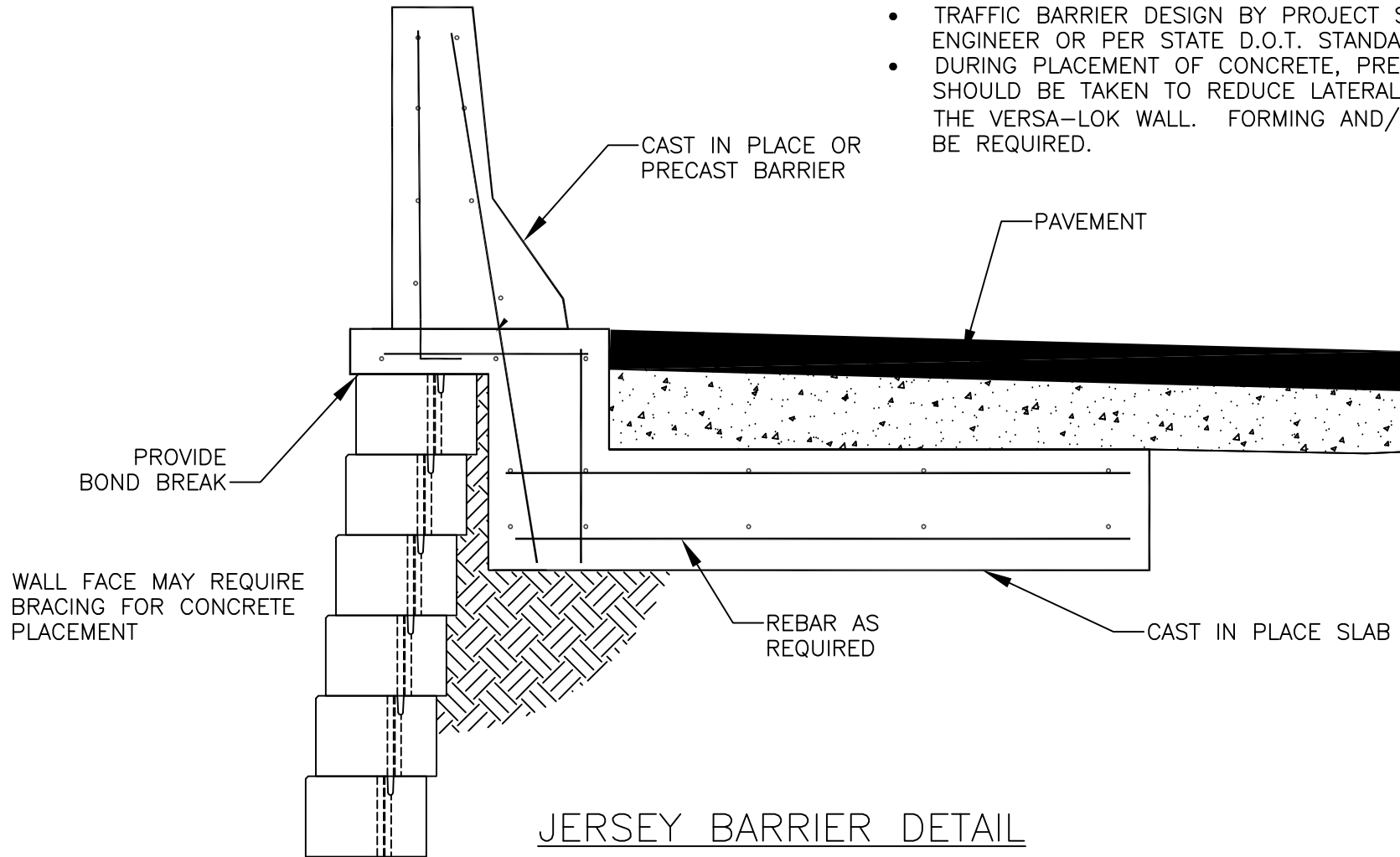
CHECKED BY:

DATE: 10/2007

DWG. NO. of inside 90 corner

NOTES:

- BARRIERS MAY BE SET ON TOP OF OR BEHIND WALL
- BARRIERS ON TOP OF WALL SHALL BE DESIGNED TO ACCOMMODATE DIFFERENTIAL MOVEMENT OF RETAINING WALLS
- TRAFFIC BARRIER DESIGN BY PROJECT STRUCTURAL ENGINEER OR PER STATE D.O.T. STANDARDS
- DURING PLACEMENT OF CONCRETE, PRECAUTIONS SHOULD BE TAKEN TO REDUCE LATERAL PRESSURES ON THE VERSA-LOK WALL. FORMING AND/OR BRACING MAY BE REQUIRED.



JERSEY BARRIER DETAIL

SQUARE FOOT UNIT-TRAFFIC BARRIER SECTION

SCALE: NONE

THESE PRELIMINARY DETAILS ARE INTENDED AS AN AID IN DESIGNING ATTRACTIVE, DURABLE RETAINING WALLS WITH VERSA-LOK UNITS. FINAL DETERMINATION OF THE SUITABILITY OF ANY INFORMATION OR MATERIAL FOR THE USE CONTEMPLATED, AND ITS MANNER OF USE, IS THE SOLE RESPONSIBILITY OF THE USER. A FINAL PROJECT SPECIFIC DESIGN SHOULD BE PREPARED BY A QUALIFIED, LICENSED, PROFESSIONAL ENGINEER.



VERSA-LOK®
Retaining Wall Systems

(800)770-4525 fax(651)770-4089
6348 Hwy36 Ste1, Oakdale,MN 55128 **Solid Solutions™**

VERSA-LOK SQUARE FOOT DETAILS

JERSEY BARRIER DETAIL

SCALE: 3/4"=1'

DRAWN BY: PPS

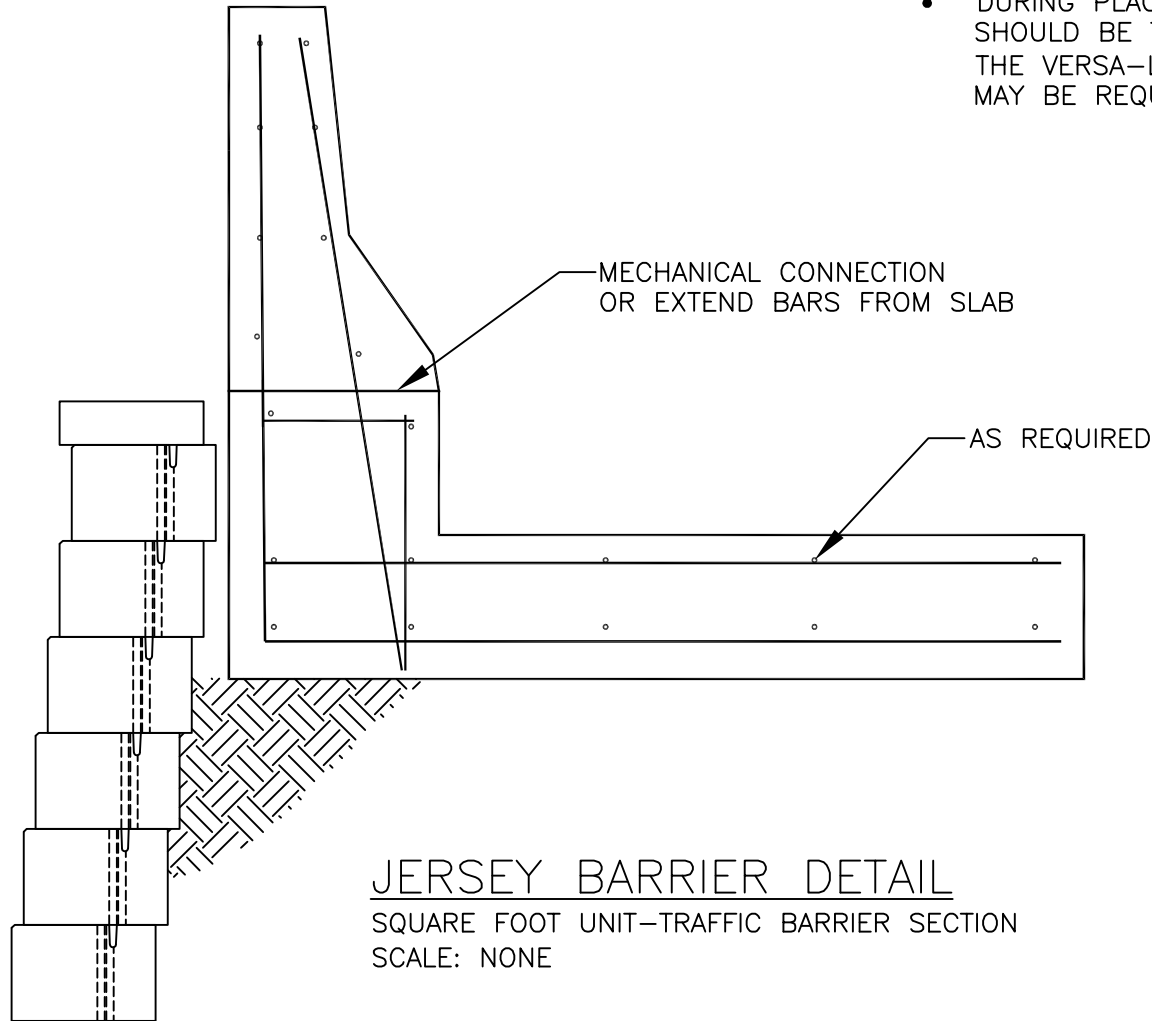
CHECKED BY:

DATE: 10/2007

DWG. NO. of traffic barrier detail

NOTES:

- BARRIERS MAY BE SET ON TOP OF OR BEHIND WALL
- BARRIERS ON TOP OF WALL SHALL BE DESIGNED TO ACCOMMODATE DIFFERENTIAL MOVEMENT OF RETAINING WALLS
- TRAFFIC BARRIER DESIGN BY PROJECT STRUCTURAL ENGINEER OR PER STATE D.O.T. STANDARDS
- DURING PLACEMENT OF CONCRETE, PRECAUTIONS SHOULD BE TAKEN TO REDUCE LATERAL PRESSURES ON THE VERSA-LOK WALL. FORMING AND/OR BRACING MAY BE REQUIRED.

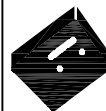


JERSEY BARRIER DETAIL

SQUARE FOOT UNIT-TRAFFIC BARRIER SECTION

SCALE: NONE

THESE PRELIMINARY DETAILS ARE INTENDED AS AN AID IN DESIGNING ATTRACTIVE, DURABLE RETAINING WALLS WITH VERSA-LOK UNITS. FINAL DETERMINATION OF THE SUITABILITY OF ANY INFORMATION OR MATERIAL FOR THE USE CONTEMPLATED, AND ITS MANNER OF USE, IS THE SOLE RESPONSIBILITY OF THE USER. A FINAL PROJECT SPECIFIC DESIGN SHOULD BE PREPARED BY A QUALIFIED, LICENSED, PROFESSIONAL ENGINEER.



VERSA-LOK®
Retaining Wall Systems

(800)770-4525 fax(651)770-4089
6348 Hwy36 Ste1, Oakdale,MN 55128 **Solid Solutions™**

VERSA-LOK SQUARE FOOT DETAILS

JERSEY BARRIER DETAIL

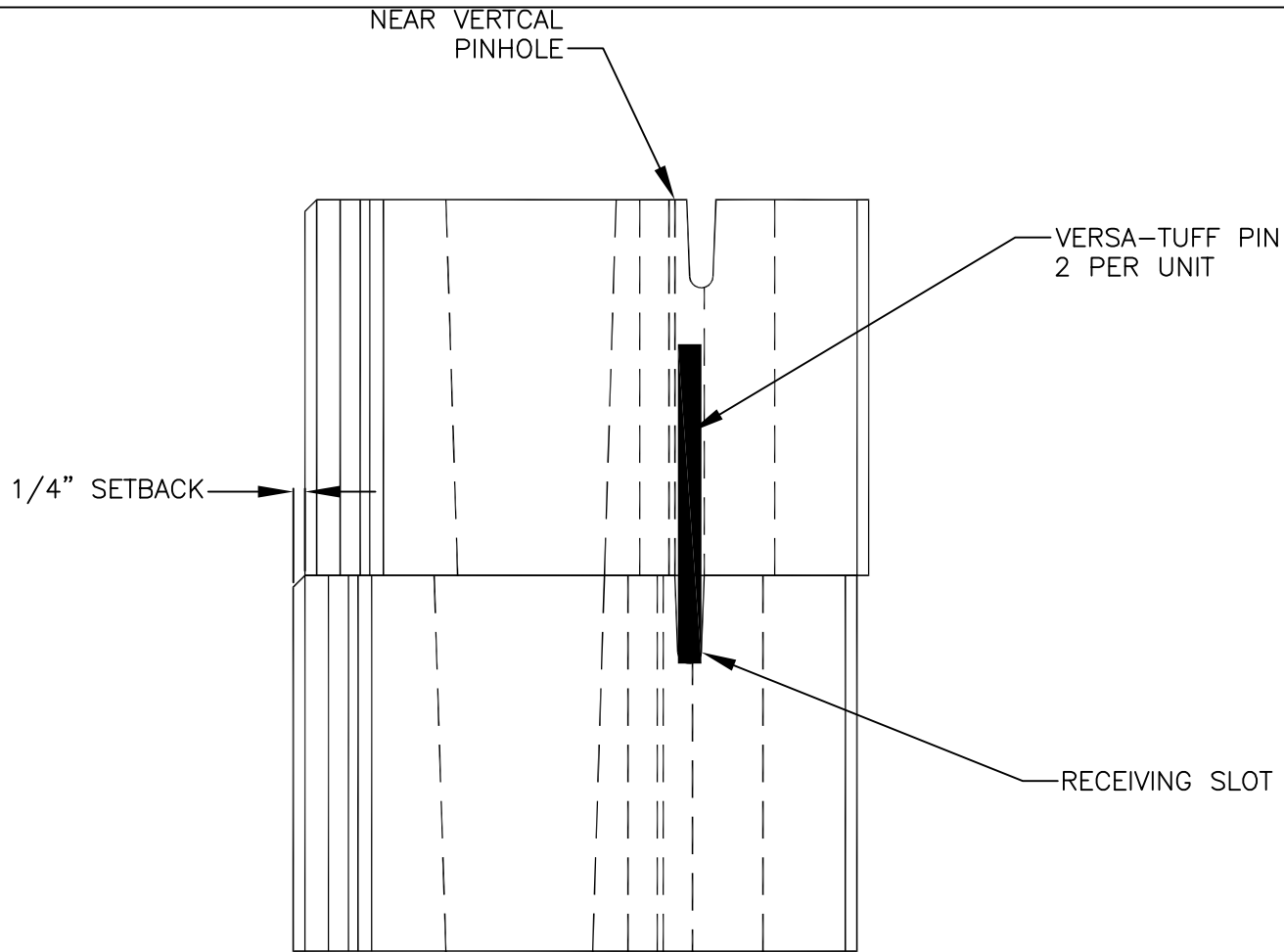
SCALE: 3/4"=1'

DRAWN BY: PPS

CHECKED BY:

DATE: 10/2007

DWG. NO. of traffic barrier detail



NEAR VERTICAL PINNING DETAIL

SQUARE FOOT UNIT—CROSS SECTION

SCALE: NONE

THESE PRELIMINARY DETAILS ARE INTENDED AS AN AID IN DESIGNING ATTRACTIVE, DURABLE RETAINING WALLS WITH VERSA-LOK UNITS. FINAL DETERMINATION OF THE SUITABILITY OF ANY INFORMATION OR MATERIAL FOR THE USE CONTEMPLATED, AND ITS MANNER OF USE, IS THE SOLE RESPONSIBILITY OF THE USER. A FINAL PROJECT SPECIFIC DESIGN SHOULD BE PREPARED BY A QUALIFIED, LICENSED, PROFESSIONAL ENGINEER.



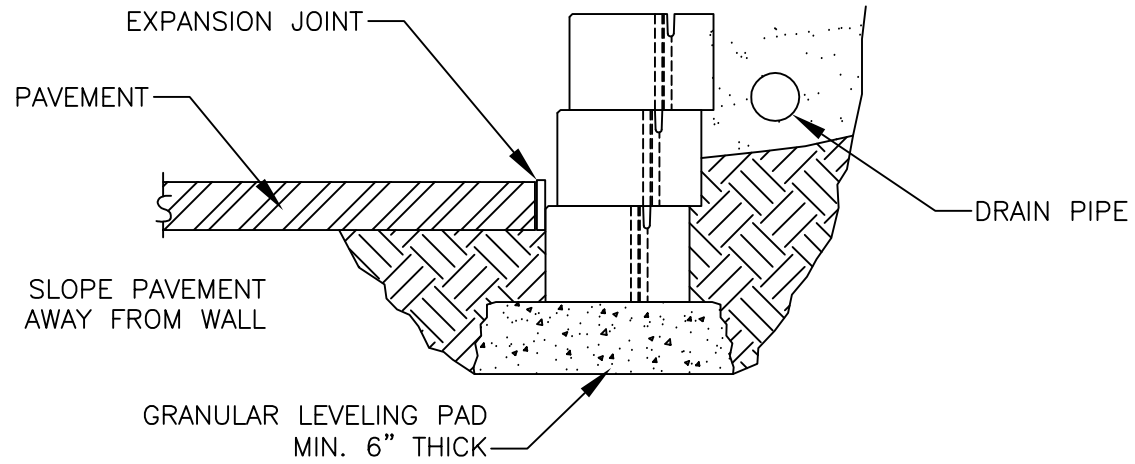
VERSA-LOK[®]
Retaining Wall Systems

(800)770-4525 fax(651)770-4089
 6348 Hwy36 Ste1, Oakdale,MN 55128 **Solid Solutions[™]**

VERSA-LOK SQUARE FOOT DETAILS

NEAR VERTICAL PINNING

SCALE:	3"=1'
DRAWN BY:	PPS
CHECKED BY:	
DATE:	10/2007
DWG. NO.	sf near vertical pinning



PAVEMENT AT BASE OF WALL

SQUARE FOOT UNIT
SCALE: NONE

THESE PRELIMINARY DETAILS ARE INTENDED AS AN AID IN DESIGNING ATTRACTIVE, DURABLE RETAINING WALLS WITH VERSA-LOK UNITS. FINAL DETERMINATION OF THE SUITABILITY OF ANY INFORMATION OR MATERIAL FOR THE USE CONTEMPLATED, AND ITS MANNER OF USE, IS THE SOLE RESPONSIBILITY OF THE USER. A FINAL PROJECT SPECIFIC DESIGN SHOULD BE PREPARED BY A QUALIFIED, LICENSED, PROFESSIONAL ENGINEER.



VERSA-LOK[®]
Retaining Wall Systems

(800)770-4525 fax(651)770-4089
6348 Hwy36 Ste1, Oakdale, MN 55128 **Solid Solutions[™]**

VERSA-LOK SQUARE FOOT DETAILS

PAVEMENT AT BASE OF WALL

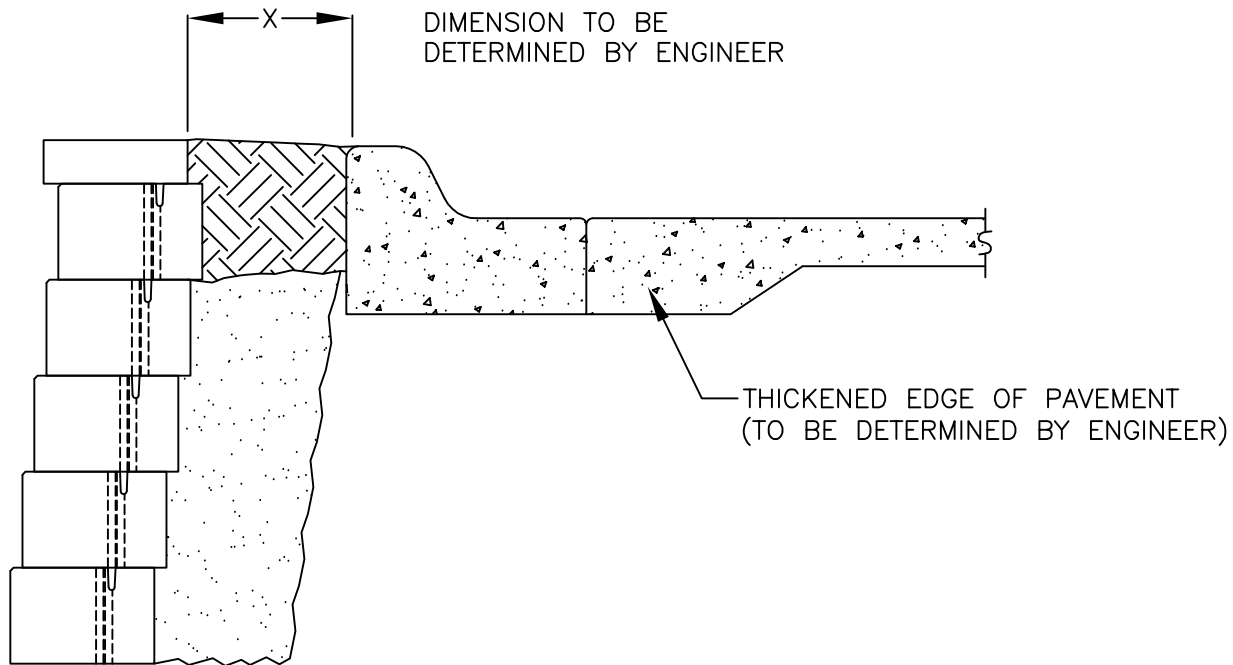
SCALE: 3/4"=1'

DRAWN BY: PPS

CHECKED BY:

DATE: 10/2007

DWG. NO. of pavement at base of wall



PAVEMENT DETAIL

SQUARE FOOT UNIT

SCALE: NONE

THESE PRELIMINARY DETAILS ARE INTENDED AS AN AID IN DESIGNING ATTRACTIVE, DURABLE RETAINING WALLS WITH VERSA-LOK UNITS. FINAL DETERMINATION OF THE SUITABILITY OF ANY INFORMATION OR MATERIAL FOR THE USE CONTEMPLATED, AND ITS MANNER OF USE, IS THE SOLE RESPONSIBILITY OF THE USER. A FINAL PROJECT SPECIFIC DESIGN SHOULD BE PREPARED BY A QUALIFIED, LICENSED, PROFESSIONAL ENGINEER.



VERSA-LOK®
Retaining Wall Systems

(800)770-4525 fax(651)770-4089
6348 Hwy36 Ste1, Oakdale,MN 55128 **Solid Solutions™**

VERSA-LOK SQUARE FOOT DETAILS

PAVEMENT AT TOP OF WALL

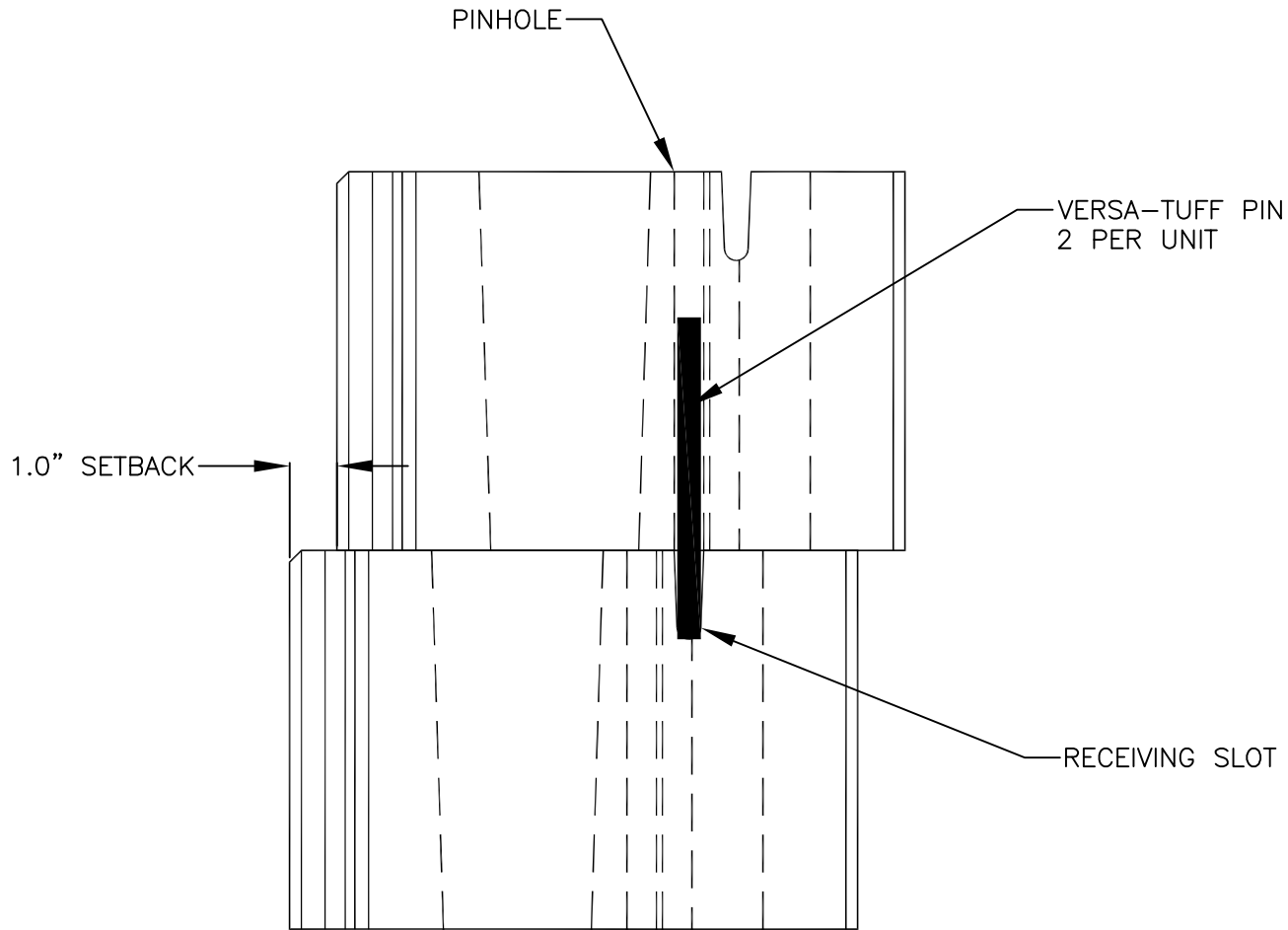
SCALE: 3/4"=1'

DRAWN BY: PPS

CHECKED BY:

DATE: 10/2007

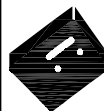
DWG. NO. of pavement at top of wall



PINNING DETAIL

SQUARE FOOT UNIT—CROSS SECTION
SCALE: NONE

THESE PRELIMINARY DETAILS ARE INTENDED AS AN AID IN DESIGNING ATTRACTIVE, DURABLE RETAINING WALLS WITH VERSA-LOK UNITS. FINAL DETERMINATION OF THE SUITABILITY OF ANY INFORMATION OR MATERIAL FOR THE USE CONTEMPLATED, AND ITS MANNER OF USE, IS THE SOLE RESPONSIBILITY OF THE USER. A FINAL PROJECT SPECIFIC DESIGN SHOULD BE PREPARED BY A QUALIFIED, LICENSED, PROFESSIONAL ENGINEER.



VERSA-LOK[®]
Retaining Wall Systems

(800)770-4525 fax(651)770-4089
6348 Hwy36 Ste1, Oakdale,MN 55128 **Solid Solutions[™]**

VERSA-LOK SQUARE FOOT DETAILS

PINNING

SCALE: 3"=1'

DRAWN BY: PPS

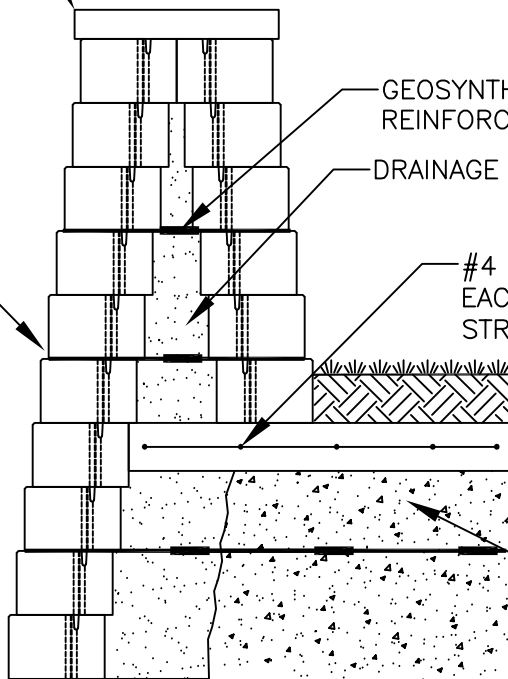
CHECKED BY:

DATE: 10/2007

DWG. NO. of pinning

CAP ADHERED W/ CONCRETE ADHESIVE
CONSISTING OF SEGMENTED PRE-CAST, STONE,
OR MODIFIED VERSA-LOK CAP UNITS

VERSA-LOK SQUARE FOOT
CONCRETE UNITS



GEOSYNTHETIC SOIL
REINFORCEMENT

DRAINAGE AGGREGATE

#4 REBAR AT 12" SPACING
EACH WAY OR PER PROJECT
STRUCTURAL ENGINEER'S DIRECTION

6"X48" CONTINUOUS
REINFORCED FOUNDATION

IN NORTHERN CLIMATES, SELECT
GRANULAR BACKFILL COMPACTED
TO 95% OF MAXIMUM STANDARD
PROCTOR DENSITY SHOULD BE
USED DIRECTLY BELOW THE SLAB
TO MINIMIZE FROST HEAVE

TYPICAL SECTION—BACK TO BACK

SQUARE FOOT UNITS—BACK TO BACK TOP OF WALL

SCALE: NONE

THESE PRELIMINARY DETAILS ARE INTENDED AS AN AID IN DESIGNING ATTRACTIVE, DURABLE RETAINING WALLS WITH VERSA-LOK UNITS. FINAL DETERMINATION OF THE SUITABILITY OF ANY INFORMATION OR MATERIAL FOR THE USE CONTEMPLATED, AND ITS MANNER OF USE, IS THE SOLE RESPONSIBILITY OF THE USER. A FINAL PROJECT SPECIFIC DESIGN SHOULD BE PREPARED BY A QUALIFIED, LICENSED, PROFESSIONAL ENGINEER.



VERSA-LOK®
Retaining Wall Systems

(800)770-4525 fax(651)770-4089
6348 Hwy36 Ste1, Oakdale, MN 55128 **Solid Solutions™**

VERSA-LOK SQUARE FOOT DETAILS

BACK TO BACK TOP OF WALL

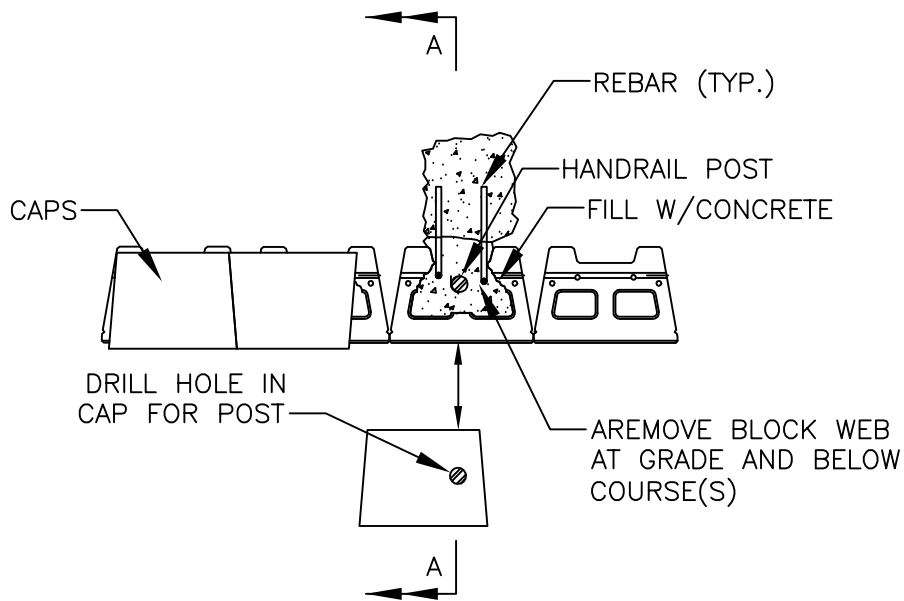
SCALE: 1/2"=1'

DRAWN BY: PPS

CHECKED BY:

DATE: 10/2007

DWG. NO. if back to back tow

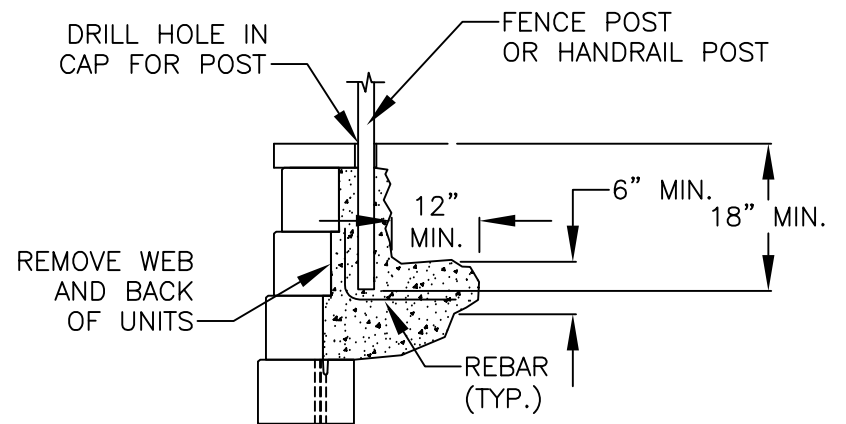


POST DETAIL—PLAN VIEW

SQUARE FOOT UNIT

TYPICAL HANDRAIL AND/OR FENCE POST

SCALE: NONE



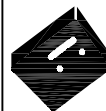
POST DETAIL—SECTION A—A

SQUARE FOOT UNIT

TYPICAL HANDRAIL AND/OR FENCE POST

SCALE: NONE

THESE PRELIMINARY DETAILS ARE INTENDED AS AN AID IN DESIGNING ATTRACTIVE, DURABLE RETAINING WALLS WITH VERSA-LOK UNITS. FINAL DETERMINATION OF THE SUITABILITY OF ANY INFORMATION OR MATERIAL FOR THE USE CONTEMPLATED, AND ITS MANNER OF USE, IS THE SOLE RESPONSIBILITY OF THE USER. A FINAL PROJECT SPECIFIC DESIGN SHOULD BE PREPARED BY A QUALIFIED, LICENSED, PROFESSIONAL ENGINEER.



VERSA-LOK[®]
Retaining Wall Systems

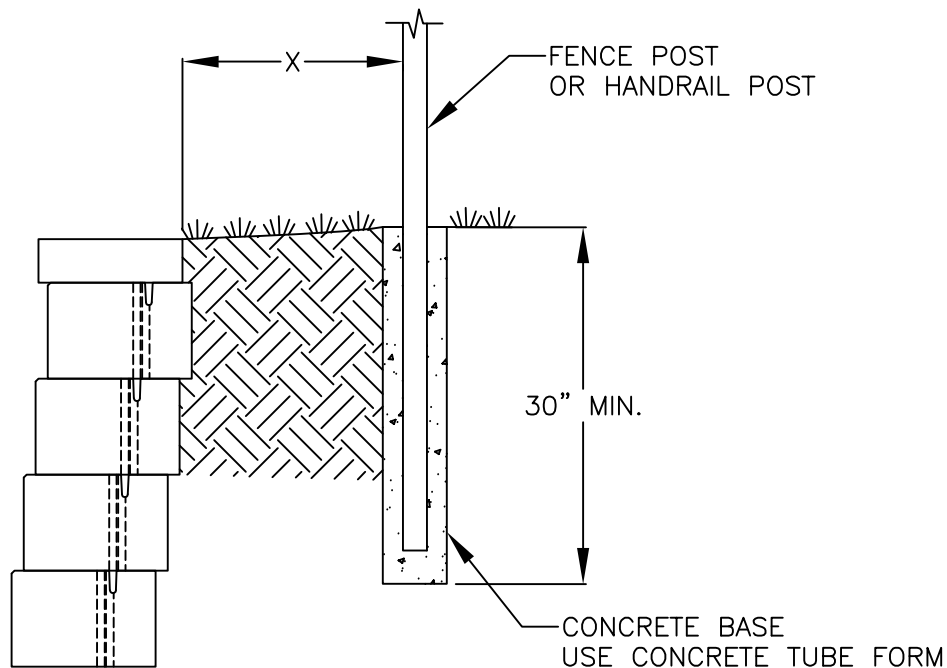
(800)770-4525 fax(651)770-4089
6348 Hwy36 Ste1, Oakdale, MN 55128 **Solid Solutions[™]**

VERSA-LOK SQUARE FOOT DETAILS

POST DETAIL

SCALE:	1/2"=1'
DRAWN BY:	PPS
CHECKED BY:	
DATE:	10/2007
DWG. NO.	sf post detail

DISTANCE X TO BE DETERMINED
BY ENGINEER BASED ON SOIL AND
LOADING CONDITIONS



POST DETAIL

SQUARE FOOT UNIT—
TYPICAL HANDRAIL AND/OR FENCE POST
SCALE: NONE

THESE PRELIMINARY DETAILS ARE INTENDED AS AN AID IN DESIGNING ATTRACTIVE, DURABLE RETAINING WALLS WITH VERSA-LOK UNITS. FINAL DETERMINATION OF THE SUITABILITY OF ANY INFORMATION OR MATERIAL FOR THE USE CONTEMPLATED, AND ITS MANNER OF USE, IS THE SOLE RESPONSIBILITY OF THE USER. A FINAL PROJECT SPECIFIC DESIGN SHOULD BE PREPARED BY A QUALIFIED, LICENSED, PROFESSIONAL ENGINEER.



VERSA-LOK®
Retaining Wall Systems

(800)770-4525 fax(651)770-4089
6348 Hwy36 Ste1, Oakdale,MN 55128 **Solid Solutions™**

VERSA-LOK SQUARE FOOT DETAILS

POST DETAIL II

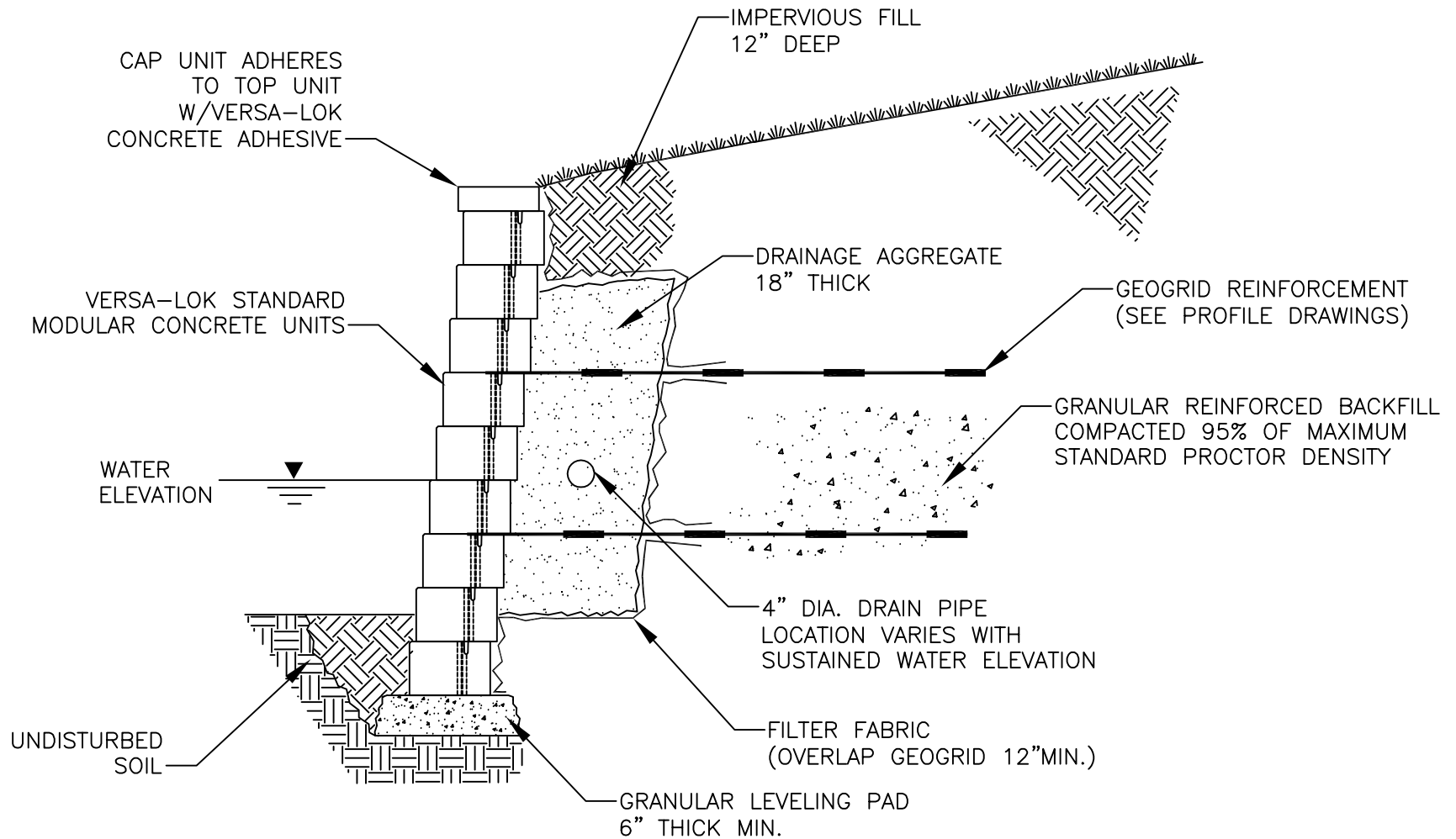
SCALE: 3/4"=1'

DRAWN BY: PPS

CHECKED BY:

DATE: 10/2007

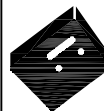
DWG. NO. of post detail II



TYPICAL SECTION—REINFORCED RETENTION POND WALL

SQUARE FOOT UNIT
SCALE: NONE

THESE PRELIMINARY DETAILS ARE INTENDED AS AN AID IN DESIGNING ATTRACTIVE, DURABLE RETAINING WALLS WITH VERSA-LOK UNITS. FINAL DETERMINATION OF THE SUITABILITY OF ANY INFORMATION OR MATERIAL FOR THE USE CONTEMPLATED, AND ITS MANNER OF USE, IS THE SOLE RESPONSIBILITY OF THE USER. A FINAL PROJECT SPECIFIC DESIGN SHOULD BE PREPARED BY A QUALIFIED, LICENSED, PROFESSIONAL ENGINEER.



VERSA-LOK®
Retaining Wall Systems

(800)770-4525 fax (651)770-4089
6348 Hwy36 Ste1, Oakdale, MN 55128 **Solid Solutions™**

VERSA-LOK SQUARE FOOT DETAILS

REINFORCED RETENTION POND

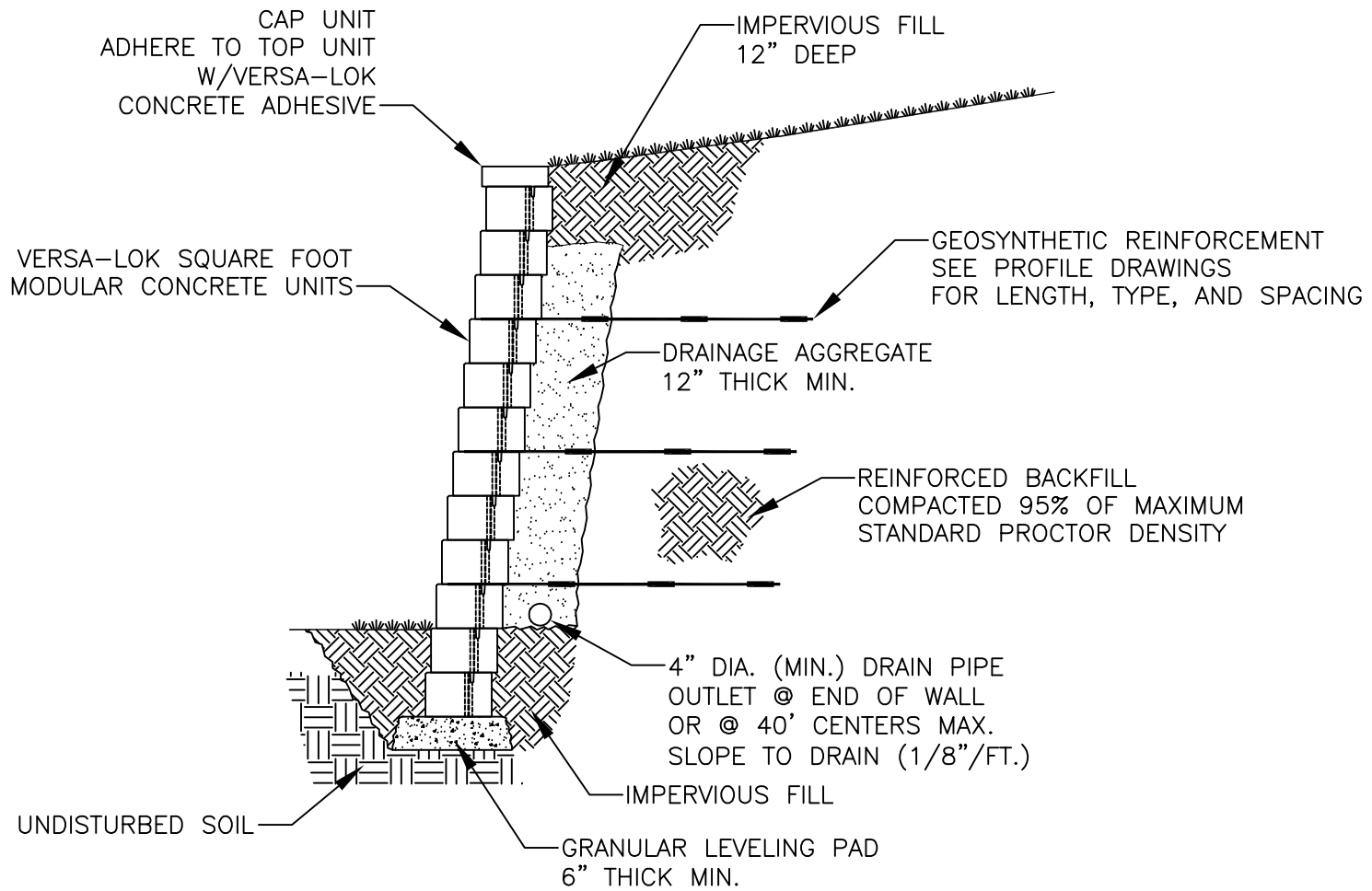
SCALE: 1/2"=1'

DRAWN BY: PPS

CHECKED BY:

DATE: 10/2007

DWG. NO. of reinforced retention pond wall

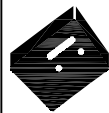


TYPICAL SECTION—REINFORCED RETAINING WALL

SQUARE FOOT MODULAR CONCRETE UNIT

SCALE: NONE

THESE PRELIMINARY DETAILS ARE INTENDED AS AN AID IN DESIGNING ATTRACTIVE, DURABLE RETAINING WALLS WITH VERSA-LOK UNITS. FINAL DETERMINATION OF THE SUITABILITY OF ANY INFORMATION OR MATERIAL FOR THE USE CONTEMPLATED, AND ITS MANNER OF USE, IS THE SOLE RESPONSIBILITY OF THE USER. A FINAL PROJECT SPECIFIC DESIGN SHOULD BE PREPARED BY A QUALIFIED, LICENSED, PROFESSIONAL ENGINEER.



VERSA-LOK[®]
Retaining Wall Systems

(800)770-4525 fax(651)770-4089
 6348 Hwy36 Ste1, Oakdale,MN 55128 **Solid Solutions[™]**

VERSA-LOK SQUARE FOOT DETAILS

REINFORCED TYPICAL SECTION

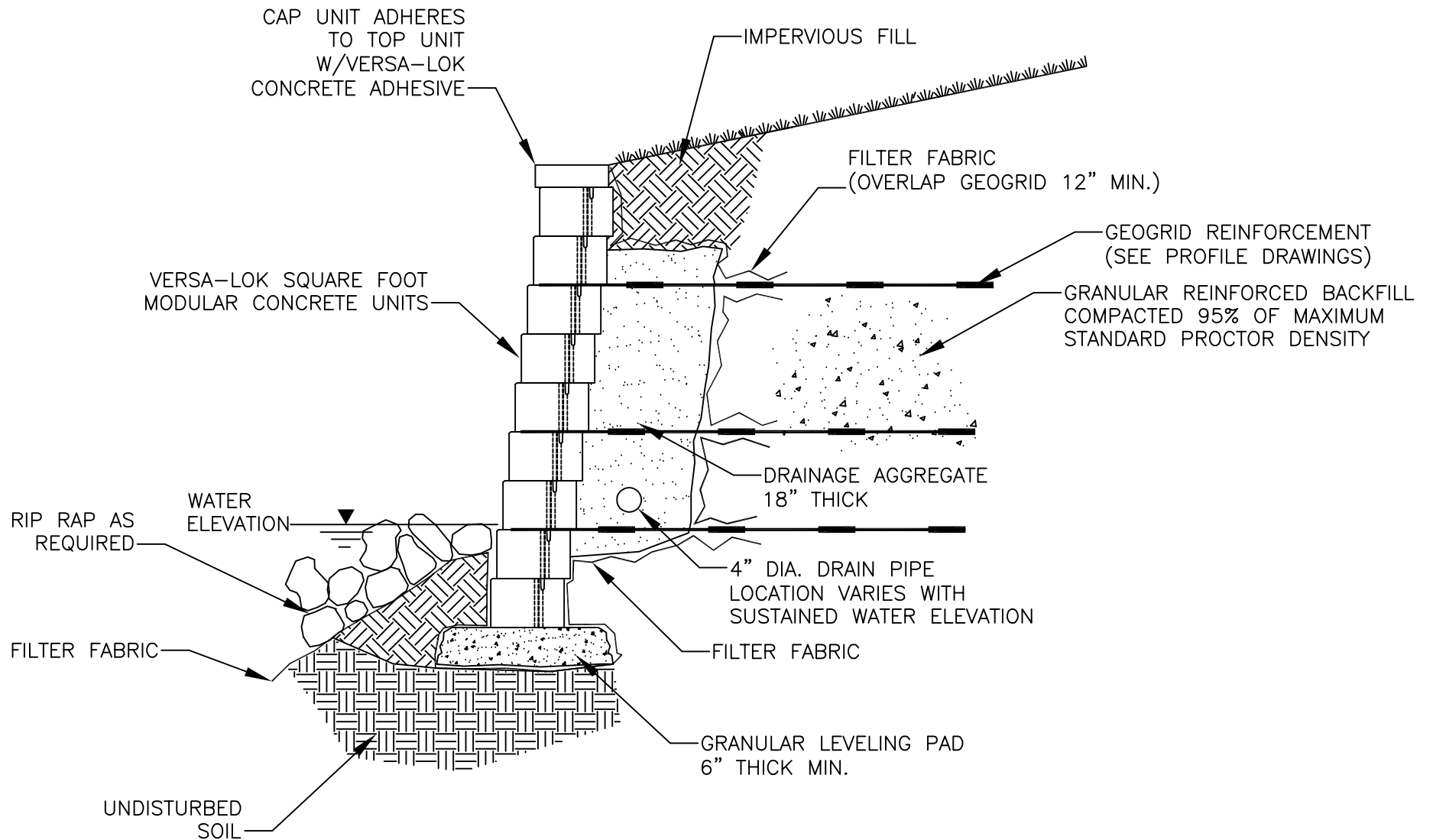
SCALE: 3/8"=1'

DRAWN BY: PPS

CHECKED BY:

DATE: 10/2007

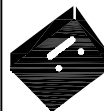
DWG. NO. of reinforced section



TYPICAL SECTION-REINFORCED SHORELINE WALL

SQUARE FOOT UNIT
SCALE: NONE

THESE PRELIMINARY DETAILS ARE INTENDED AS AN AID IN DESIGNING ATTRACTIVE, DURABLE RETAINING WALLS WITH VERSA-LOK UNITS. FINAL DETERMINATION OF THE SUITABILITY OF ANY INFORMATION OR MATERIAL FOR THE USE CONTEMPLATED, AND ITS MANNER OF USE, IS THE SOLE RESPONSIBILITY OF THE USER. A FINAL PROJECT SPECIFIC DESIGN SHOULD BE PREPARED BY A QUALIFIED, LICENSED, PROFESSIONAL ENGINEER.



VERSA-LOK®
Retaining Wall Systems

(800)770-4525 fax(651)770-4089
6348 Hwy36 Ste1, Oakdale,MN 55128 **Solid Solutions™**

VERSA-LOK SQUARE FOOT DETAILS

REINFORCED SHORELINE WALL

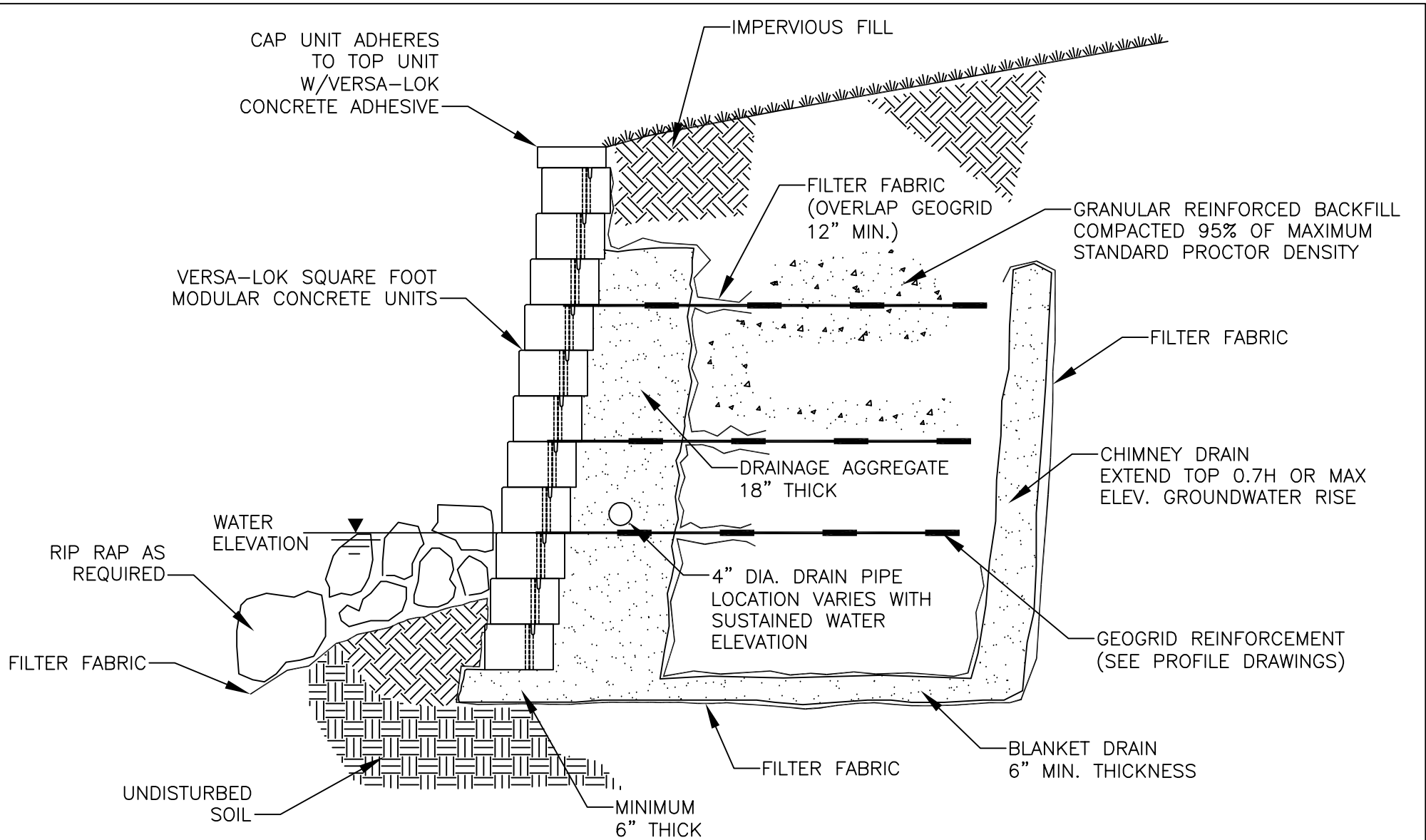
SCALE: 1/2"=1'

DRAWN BY: PPS

CHECKED BY:

DATE: 10/2007

DWG. NO. of reinforced shoreline wall



TYPICAL SECTION—REINFORCED SHORELINE WALL
 SQUARE FOOT UNIT—WITH BLANKET AND CHIMNEY DRAIN
 SCALE: NONE

THESE PRELIMINARY DETAILS ARE INTENDED AS AN AID IN DESIGNING ATTRACTIVE, DURABLE RETAINING WALLS WITH VERSA-LOK UNITS. FINAL DETERMINATION OF THE SUITABILITY OF ANY INFORMATION OR MATERIAL FOR THE USE CONTEMPLATED, AND ITS MANNER OF USE, IS THE SOLE RESPONSIBILITY OF THE USER. A FINAL PROJECT SPECIFIC DESIGN SHOULD BE PREPARED BY A QUALIFIED, LICENSED, PROFESSIONAL ENGINEER.

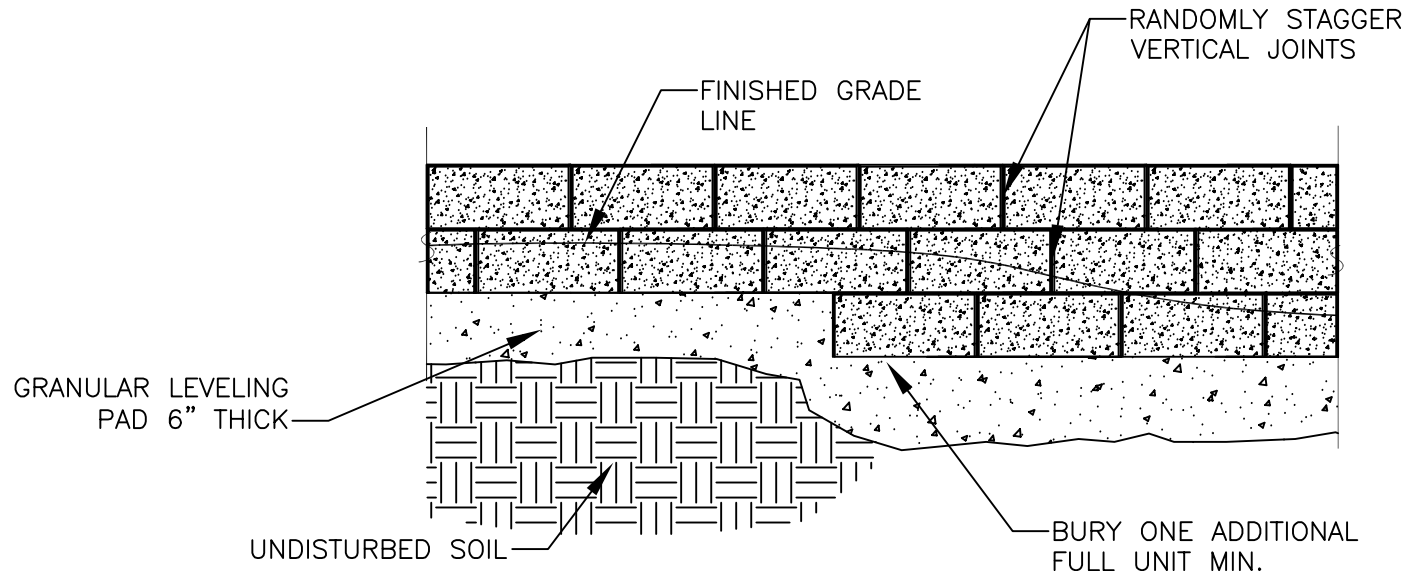


VERSA-LOK®
Retaining Wall Systems
Solid Solutions™
 (800)770-4525 fax(651)770-4089
 6348 Hwy36 Ste1, Oakdale,MN 55128

VERSA-LOK SQUARE FOOT DETAILS

REINFORCED SHORELINE WALL

SCALE:	1/2"=1'
DRAWN BY:	PPS
CHECKED BY:	
DATE:	10/2007
DWG. NO.	of reinforced shoreline wall II



NOTE:

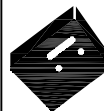
- LIMIT CHANGES IN BASE ELEVATION TO 8" PER STEP TO AVOID DIFFERENTIAL SETTLEMENT
- STEP AS NEEDED TO MINIMIZE BURIED UNITS AND MAINTAIN MINIMUM REQUIRED EMBEDMENT

STEPPING BASE DETAIL

SQUARE FOOT UNIT

SCALE: NONE

THESE PRELIMINARY DETAILS ARE INTENDED AS AN AID IN DESIGNING ATTRACTIVE, DURABLE RETAINING WALLS WITH VERSA-LOK UNITS. FINAL DETERMINATION OF THE SUITABILITY OF ANY INFORMATION OR MATERIAL FOR THE USE CONTEMPLATED, AND ITS MANNER OF USE, IS THE SOLE RESPONSIBILITY OF THE USER. A FINAL PROJECT SPECIFIC DESIGN SHOULD BE PREPARED BY A QUALIFIED, LICENSED, PROFESSIONAL ENGINEER.



VERSA-LOK®
Retaining Wall Systems

(800)770-4525 fax(651)770-4089
6348 Hwy36 Ste1, Oakdale, MN 55128 **Solid Solutions™**

VERSA-LOK SQUARE FOOT DETAILS

BASE STEPPING

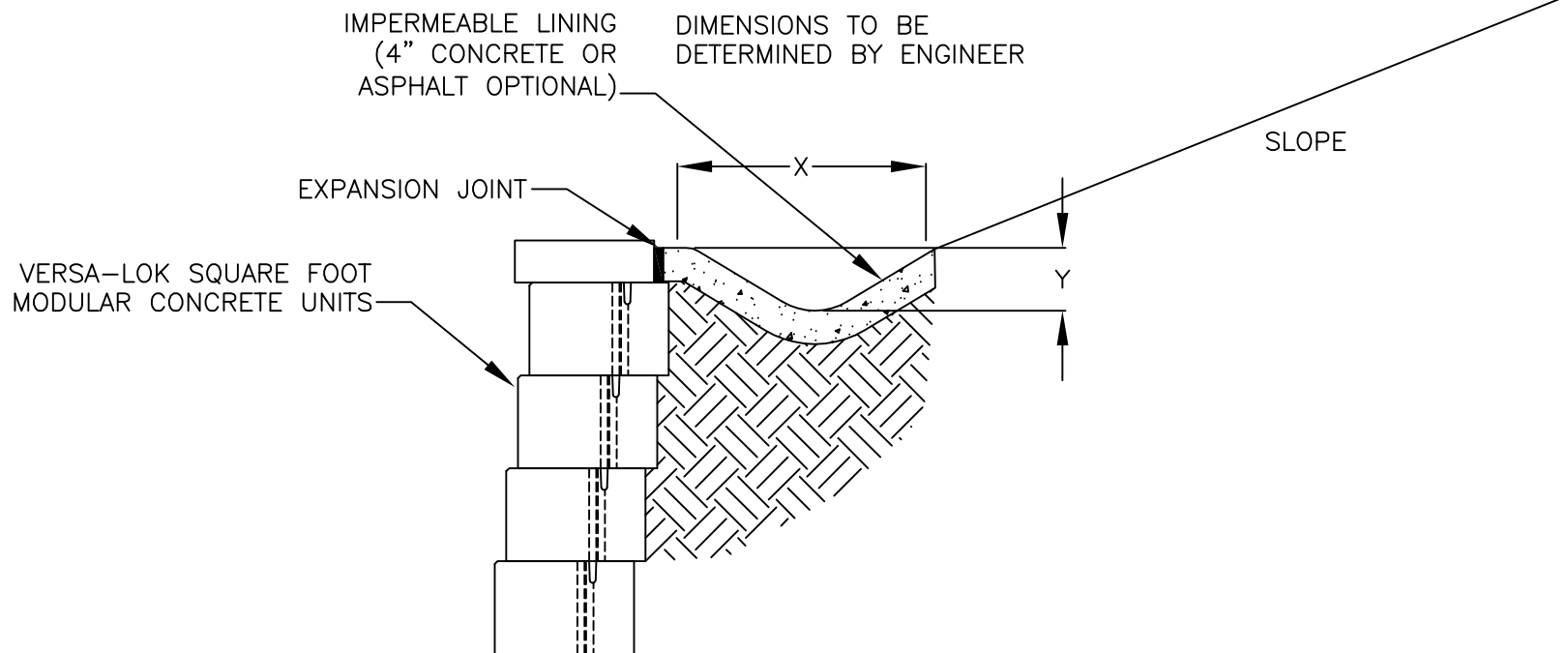
SCALE: 1/2"=1'

DRAWN BY: PPS

CHECKED BY:

DATE: 10/2007

DWG. NO. of base stepping



SWALE AT TOP OF WALL

SQUARE FOOT UNIT (OPTIONAL) SLOPE AT TOP OF WALL

SCALE: NONE

THESE PRELIMINARY DETAILS ARE INTENDED AS AN AID IN DESIGNING ATTRACTIVE, DURABLE RETAINING WALLS WITH VERSA-LOK UNITS. FINAL DETERMINATION OF THE SUITABILITY OF ANY INFORMATION OR MATERIAL FOR THE USE CONTEMPLATED, AND ITS MANNER OF USE, IS THE SOLE RESPONSIBILITY OF THE USER. A FINAL PROJECT SPECIFIC DESIGN SHOULD BE PREPARED BY A QUALIFIED, LICENSED, PROFESSIONAL ENGINEER.



VERSA-LOK[®]
Retaining Wall Systems

(800)770-4525 fax(651)770-4089
 6348 Hwy36 Ste1, Oakdale,MN 55128 **Solid Solutions[™]**

VERSA-LOK SQUARE FOOT DETAILS

SWALE AT TOP OF WALL

SCALE: 3/4"=1'

DRAWN BY: PPS

CHECKED BY:

DATE: 10/2007

DWG. NO. of swale at top of wall

PROVIDE OPENING
FOR RAILING
WHERE REQUIRED

DESIGN AND CONSTRUCTION PER
CONTRACT REQUIREMENTS

PRECAST TO GRADE REQUIREMENTS
EXTEND STEEL FROM BACK FOR
ATTACHEMENT TO MOMENT SLAB

BACKFILL DETERMINED
BY SITE REQUIREMENTS

BOND BREAK

CAST-IN-PLACE MOMENT SLAB
-FOR CONCRETE PAVEMENT, SLAB MAY BE
INCORPORATED INTO THICKENED PAVEMENT
-FOR FLEXIBLE PAVEMENTS, DEPTH OF SLAB
DEPENDS ON LOADING

NOTES:

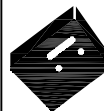
- BARRIERS MAY BE SET ON TOP OF OR BEHIND WALL
- BARRIERS ON TOP OF WALL SHALL BE DESIGNED TO ACCOMMODATE DIFFERENTIAL MOVEMENT OF RETAINING WALLS
- TRAFFIC BARRIER DESIGN BY PROJECT STRUCTURAL ENGINEER OR PER STATE D.O.T. STANDARDS
- DURING PLACEMENT OF CONCRETE, PRECAUTIONS SHOULD BE TAKEN TO REDUCE LATERAL PRESSURES ON THE VERSA-LOK WALL. FORMING AND/OR BRACING MAY BE REQUIRED.

TRAFFIC BARRIER DETAIL

SQUARE FOOT UNIT-TRAFFIC BARRIER SECTION

SCALE: NONE

THESE PRELIMINARY DETAILS ARE INTENDED AS AN AID IN DESIGNING ATTRACTIVE, DURABLE RETAINING WALLS WITH VERSA-LOK UNITS. FINAL DETERMINATION OF THE SUITABILITY OF ANY INFORMATION OR MATERIAL FOR THE USE CONTEMPLATED, AND ITS MANNER OF USE, IS THE SOLE RESPONSIBILITY OF THE USER. A FINAL PROJECT SPECIFIC DESIGN SHOULD BE PREPARED BY A QUALIFIED, LICENSED, PROFESSIONAL ENGINEER.



VERSA-LOK®
Retaining Wall Systems

(800)770-4525 fax(651)770-4089
6348 Hwy36 Ste1, Oakdale,MN 55128 **Solid Solutions™**

VERSA-LOK SQUARE FOOT DETAILS

TRAFFIC BARRIER DETAIL

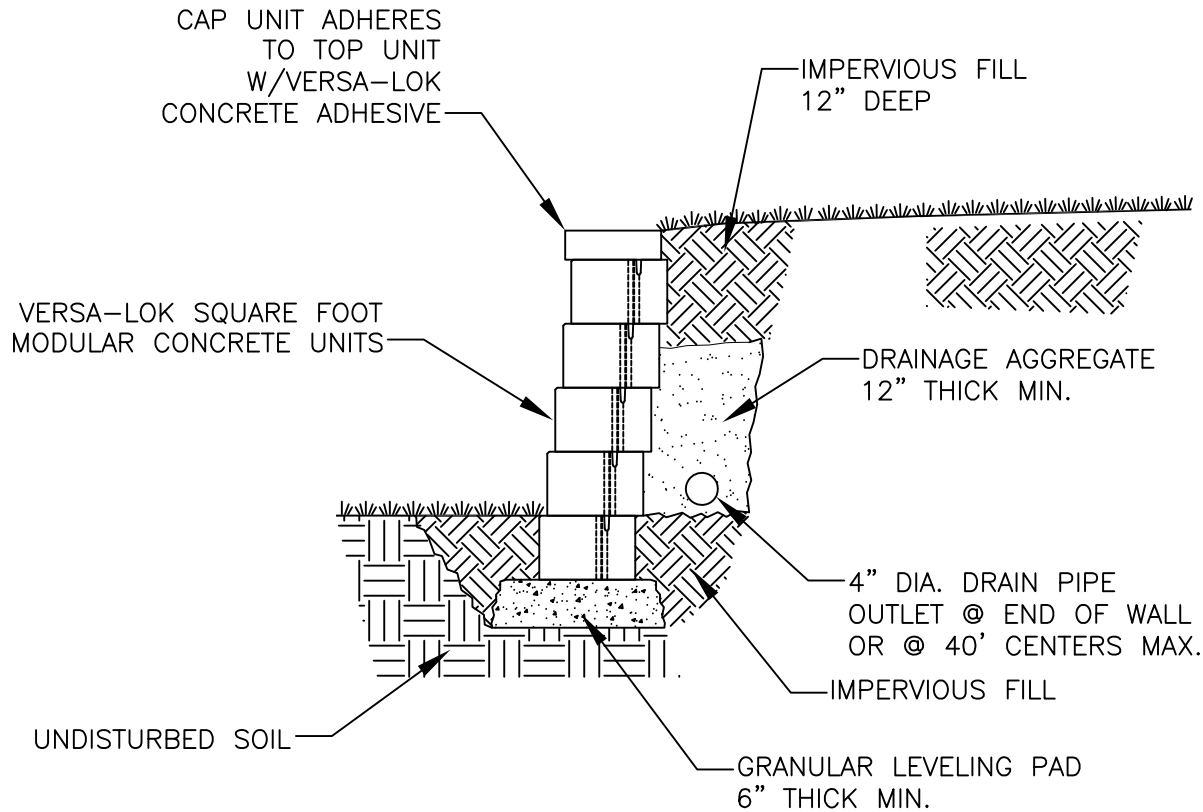
SCALE: 1/2"=1'

DRAWN BY: PPS

CHECKED BY:

DATE: 10/2007

DWG. NO. of traffic barrier detail



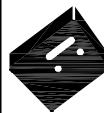
TYPICAL SECTION—UNREINFORCED RETAINING WALL

SQUARE FOOT UNIT

SCALE: NONE

MAXIMUM UNREINFORCED HEIGHT VARIES WITH SOIL, SITE CONDITIONS, AND SETBACK. REFER TO SQUARE FOOT DESIGN AND INSTALLATION GUIDELINES MANUAL, OR CALL 800-770-4525 FOR ADDITIONAL INFORMATION.

THESE PRELIMINARY DETAILS ARE INTENDED AS AN AID IN DESIGNING ATTRACTIVE, DURABLE RETAINING WALLS WITH VERSA-LOK UNITS. FINAL DETERMINATION OF THE SUITABILITY OF ANY INFORMATION OR MATERIAL FOR THE USE CONTEMPLATED, AND ITS MANNER OF USE, IS THE SOLE RESPONSIBILITY OF THE USER. A FINAL PROJECT SPECIFIC DESIGN SHOULD BE PREPARED BY A QUALIFIED, LICENSED, PROFESSIONAL ENGINEER.



VERSA-LOK[®]
Retaining Wall Systems

(800)770-4525 fax(651)770-4089
6348 Hwy36 Ste1, Oakdale, MN 55128 **Solid Solutions[™]**

VERSA-LOK SQUARE FOOT DETAILS

UNREINFORCED TYPICAL SECTION

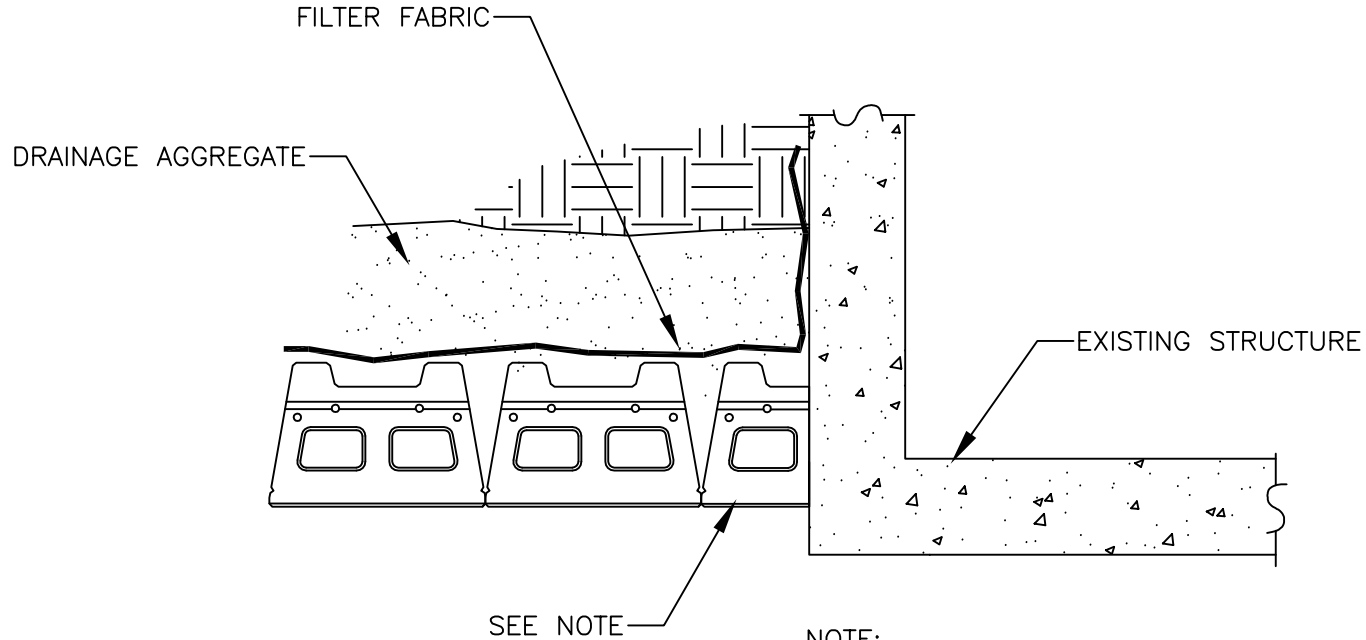
SCALE: 1/2"=1'

DRAWN BY: PPS

CHECKED BY:

DATE: 10/2007

DWG. NO. of unreinforced section



NOTE:

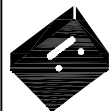
- AT ABUTMENT, ALTERNATE FULL UNIT WITH HALF UNIT EVERY OTHER COURSE
- START AT FIXED POINTS AND WORK INTO MIDDLE PART OF WALL
- DO NOT ATTACH VERSA-LOK UNITS TO OTHER STRUCTURES

WALL ABUTMENT DETAIL

SQUARE FOOT UNIT

SCALE: NONE

THESE PRELIMINARY DETAILS ARE INTENDED AS AN AID IN DESIGNING ATTRACTIVE, DURABLE RETAINING WALLS WITH VERSA-LOK UNITS. FINAL DETERMINATION OF THE SUITABILITY OF ANY INFORMATION OR MATERIAL FOR THE USE CONTEMPLATED, AND ITS MANNER OF USE, IS THE SOLE RESPONSIBILITY OF THE USER. A FINAL PROJECT SPECIFIC DESIGN SHOULD BE PREPARED BY A QUALIFIED, LICENSED, PROFESSIONAL ENGINEER.



VERSA-LOK®
Retaining Wall Systems

(800)770-4525 fax(651)770-4089
6348 Hwy36 Ste1, Oakdale,MN 55128 **Solid Solutions™**

VERSA-LOK SQUARE FOOT DETAILS

WALL ABUTMENT DETAIL

SCALE: 3/4"=1'

DRAWN BY: PPS

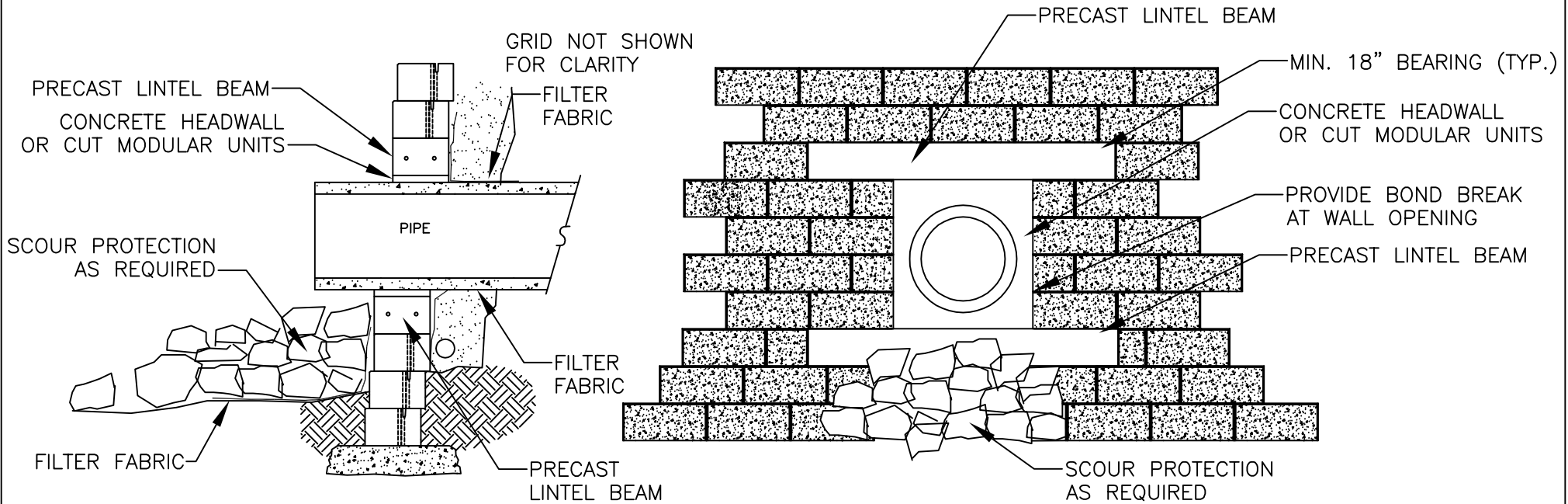
CHECKED BY:

DATE: 10/2007

DWG. NO. of wall abutment detail

LINTEL NOTES:

- FINAL BEAM SIZE, REINFORCEMENT, AND CONFIGURATION TO BE DESIGNED BY WALL DESIGN ENGINEER
- LINTEL BEAMS SHALL BE PRECAST WITH MINIMUM 7 DAYS CURE
- HEIGHT OF BEAM SHALL CORRESPOND TO HEIGHT OF MODULAR UNITS
- PLACEMENT OF LINTEL BEAMS SHALL BE CONSISTENT WITH THE PLACEMENT OF OUTFALL PIPE
- INSTALL OUTFALL PIPE PRIOR TO CONSTRUCTION OF WALL ABOVE
- OUTFALL PIPE SHALL EXTEND BEYOND BASE COURSE OF WALL NO LESS THAN 6"
- GEOTEXTILE FABRIC SHALL BE INSTALLED AROUND PIPE OPENING
- LINTEL TO EXTEND MINIMUM 18" EITHER SIDE OF PIPE



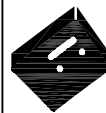
WALL W/ PIPE PENETRATION

SQUARE FOOT UNIT-SECTION
SCALE: NONE

WALL W/ PIPE PENETRATION

SQUARE FOOT UNIT-PROFILE
SCALE: NONE

THESE PRELIMINARY DETAILS ARE INTENDED AS AN AID IN DESIGNING ATTRACTIVE, DURABLE RETAINING WALLS WITH VERSA-LOK UNITS. FINAL DETERMINATION OF THE SUITABILITY OF ANY INFORMATION OR MATERIAL FOR THE USE CONTEMPLATED, AND ITS MANNER OF USE, IS THE SOLE RESPONSIBILITY OF THE USER. A FINAL PROJECT SPECIFIC DESIGN SHOULD BE PREPARED BY A QUALIFIED, LICENSED, PROFESSIONAL ENGINEER.



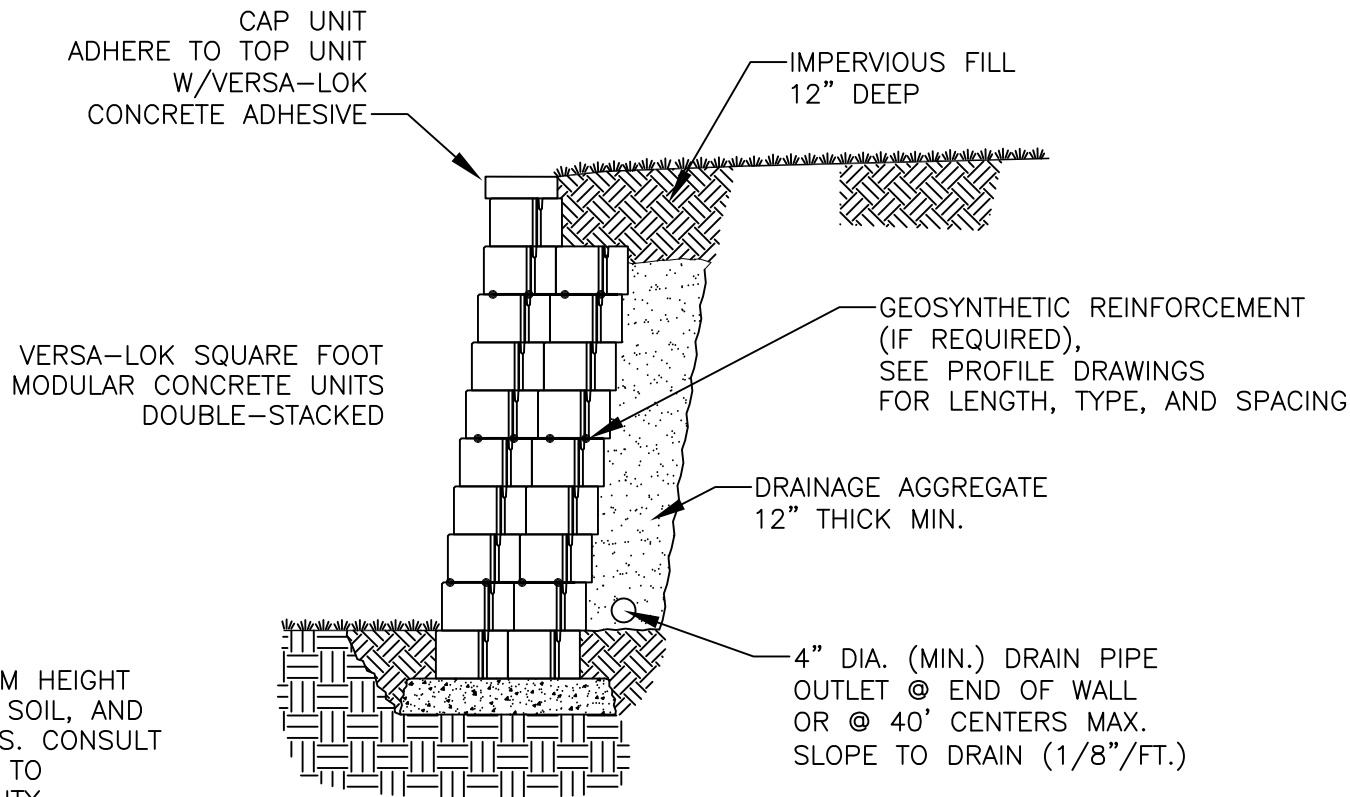
VERSA-LOK®
Retaining Wall Systems

(800)770-4525 fax(651)770-4089
6348 Hwy36 Ste1, Oakdale, MN 55128 **Solid Solutions™**

VERSA-LOK SQUARE FOOT DETAILS

REINFORCED TYPICAL SECTION

SCALE:	3/8"=1'
DRAWN BY:	PPS
CHECKED BY:	
DATE:	10/2007
DWG. NO.	of reinforced section



NOTE:
ALLOWABLE MAXIMUM HEIGHT
DEPENDS ON SITE, SOIL, AND
LOADING CONDITIONS. CONSULT
WITH AN ENGINEER TO
DETERMINE FEASIBILITY.

TYPICAL SECTION — DOUBLE-STACKED SQUARE FOOT UNIT RETAINING WALL

SCALE: AS NOTED

THESE PRELIMINARY DETAILS ARE INTENDED AS AN AID IN DESIGNING ATTRACTIVE, DURABLE RETAINING WALLS WITH VERSA-LOK UNITS. FINAL DETERMINATION OF THE SUITABILITY OF ANY INFORMATION OR MATERIAL FOR THE USE CONTEMPLATED, AND ITS MANNER OF USE, IS THE SOLE RESPONSIBILITY OF THE USER. A FINAL PROJECT SPECIFIC DESIGN SHOULD BE PREPARED BY A QUALIFIED, LICENSED, PROFESSIONAL ENGINEER.



VERSA-LOK[®]
Retaining Wall Systems

(800)770-4525 fax(651)770-4089
6348 Hwy36 Ste1, Oakdale, MN 55128 **Solid Solutions[™]**

VERSA-LOK SQUARE FOOT DETAILS

DOUBLE-STACKED SECTION

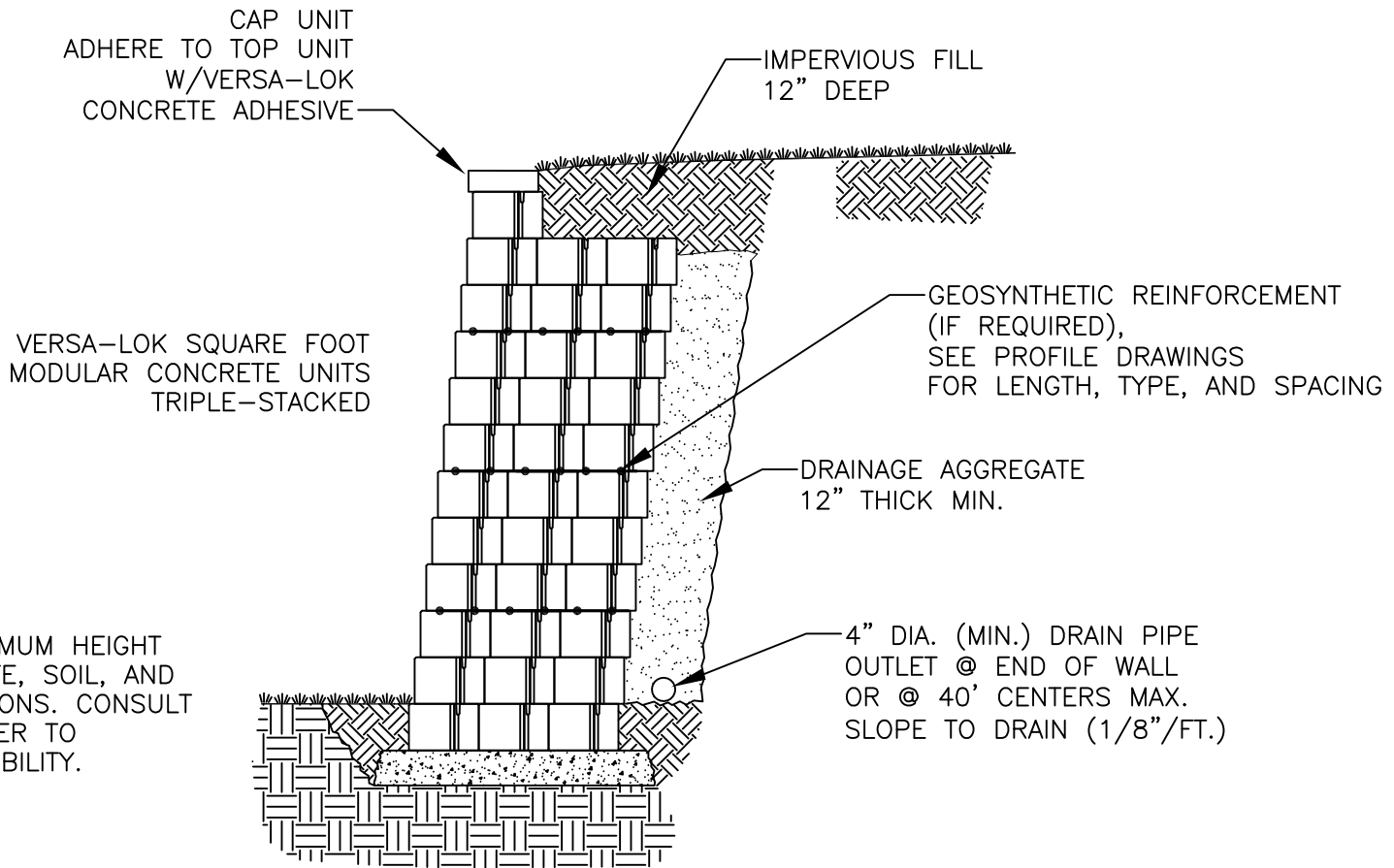
SCALE: 3/8"=1'

DRAWN BY: PDL

CHECKED BY:

DATE: 11/2010

QWC NO.
sqft double stacked



NOTE:
ALLOWABLE MAXIMUM HEIGHT
DEPENDS ON SITE, SOIL, AND
LOADING CONDITIONS. CONSULT
WITH AN ENGINEER TO
DETERMINE FEASIBILITY.

TYPICAL SECTION – TRIPLE-STACKED SQUARE FOOT UNIT RETAINING WALL
SCALE: AS NOTED

THESE PRELIMINARY DETAILS ARE INTENDED AS AN AID IN DESIGNING ATTRACTIVE, DURABLE RETAINING WALLS WITH VERSA-LOK UNITS. FINAL DETERMINATION OF THE SUITABILITY OF ANY INFORMATION OR MATERIAL FOR THE USE CONTEMPLATED, AND ITS MANNER OF USE, IS THE SOLE RESPONSIBILITY OF THE USER. A FINAL PROJECT SPECIFIC DESIGN SHOULD BE PREPARED BY A QUALIFIED, LICENSED, PROFESSIONAL ENGINEER.



VERSA-LOK[®]
Retaining Wall Systems

(800)770-4525 fax (651)770-4089
6348 Hwy36 Ste1, Oakdale, MN 55128 **Solid Solutions**[™]

VERSA-LOK SQUARE FOOT DETAILS

TRIPLE-STACKED SECTION

SCALE: 3/8"=1'

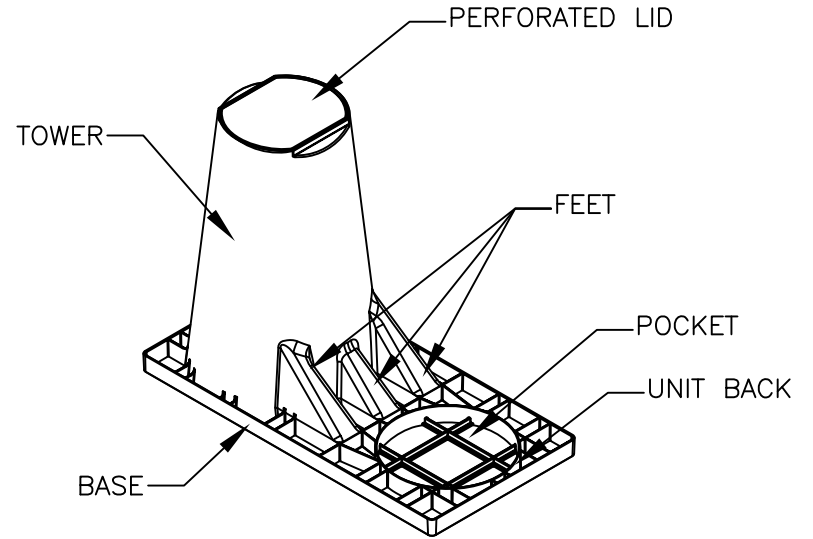
DRAWN BY: PDL

CHECKED BY:

DATE: 11/2010

DWG. NO.
sqft triple stacked

*SEE SLEEVE-IT[®] MANUFACTURER, STRATA SYSTEMS PREFERRED SPECIFICATION DOCUMENT FOR APPROPRIATE APPLICATIONS. NOT SUITABLE FOR SOLID BOARD PRIVACY FENCES, PRIVACY CLOTH, OR SCREENING.

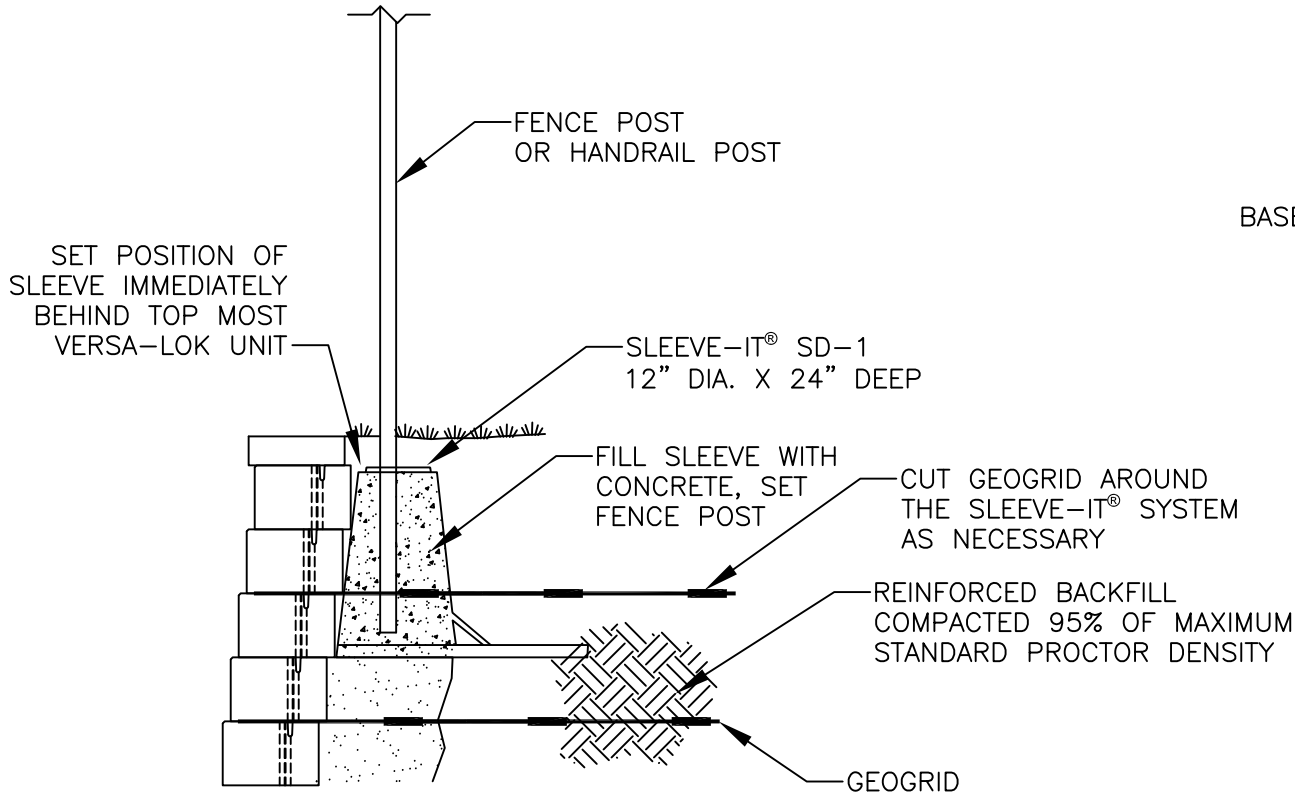


SLEEVE-IT[®] SD-1

SYSTEM COMPONENTS

SCALE: NONE

SEE SLEEVE-IT[®] SYSTEM MANUFACTURER, STRATA SYSTEMS FOR COMPLETE SPECIFICATIONS, AND TECHNICAL GUIDANCE



FENCE POST DETAIL W/ SLEEVE-IT[®] SD-1

STANDARD UNIT WITH SLEEVE-IT[®] SD-1

SCALE: 1/2"=1'

THESE PRELIMINARY DETAILS ARE INTENDED AS AN AID IN DESIGNING ATTRACTIVE, DURABLE RETAINING WALLS WITH VERSA-LOK UNITS. FINAL DETERMINATION OF THE SUITABILITY OF ANY INFORMATION OR MATERIAL FOR THE USE CONTEMPLATED, AND ITS MANNER OF USE, IS THE SOLE RESPONSIBILITY OF THE USER. A FINAL PROJECT SPECIFIC DESIGN SHOULD BE PREPARED BY A QUALIFIED, LICENSED, PROFESSIONAL ENGINEER.



VERSA-LOK[®]
Retaining Wall Systems

(800)770-4525 fax(651)770-4089
6348 Hwy36 Ste1, Oakdale, MN 55128 **Solid Solutions[™]**

VERSA-LOK SQUARE FOOT DETAILS

FENCE POST WITH SLEEVE-IT[®]

SCALE:	AS NOTED
DRAWN BY:	kan
CHECKED BY:	
DATE:	6/2019
DWG. NO.	sf fencepost with new sleeve it